

PARANJAPÉ

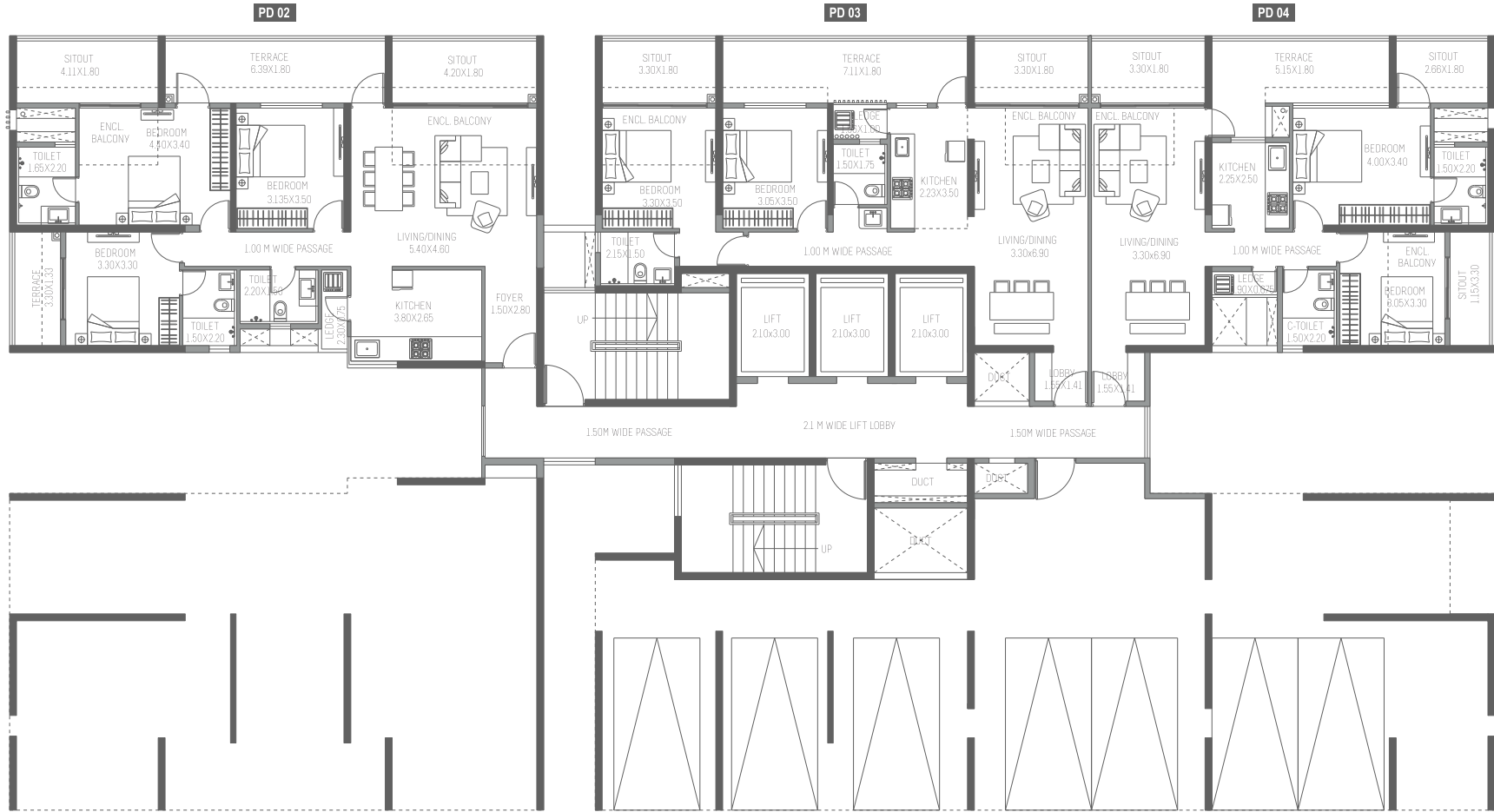
BROADWAY

BROOKLYN, MANHATTAN

2, 3 & 4 BHK HOMES AT WAKAD

FLOOR PLAN

BROOKLYN
STILT FLOOR PLAN



AREA STATEMENT (IN SQ.M.)

FLAT NO	FLAT TYPE	CARPET AREA	ENCLOSED BALCONY AREA	LEDGE AREA	TERRACE AREA	SITOUT TERRACE
PD 02	3BHK	85.10	10.71	1.84	16.47	15.83
PD 03	2BHK	64.95	9.40	1.40	12.93	12.79
PD 04	2BHK	58.55	9.40	1.39	10.99	15.40

FACTOR OF CONVERSION FROM SQ.M. TO SQ.FT. IS 10.764.



*NOTE: "carpet area" means the net usable floor area of an apartment, excluding the area covered by the external walls, areas under services shafts, exclusive balcony or verandah area and exclusive open terrace area, but includes the area covered by the internal partition walls of the apartment. Internal columns / shear walls embedded as a part of internal partition walls are included in carpet area.

BROOKLYN

1ST, 3RD, 5TH, 7TH, 9TH, 13TH, 15TH & 17TH FLOOR PLAN



AREA STATEMENT (IN SQ.M.)

FLAT NO	FLAT TYPE	CARPET AREA	ENCLOSED BALCONY AREA	LEDGE AREA	TERRACE AREA
101,301,501,701,901,1301,1501,1701	3BHK	80.62	15.24	1.80	15.83
102,302,502,702,902,1302,1502,1702	3BHK	80.62	15.24	1.80	15.83
103,303,503,703,903,1303,1503,1703	2BHK	69.32	5.03	1.40	12.80

FACTOR OF CONVERSION FROM SQ.M. TO SQ.FT. IS 10.764.

AREA STATEMENT (IN SQ.M.)

FLAT NO	FLAT TYPE	CARPET AREA	ENCLOSED BALCONY AREA	LEDGE AREA	TERRACE AREA
104,304,504,704,904,1304,1504,1704	2BHK	57.57	10.40	1.40	11.34
105,305,505,705,905,1305,1505,1705	2BHK	56.49	10.40	1.39	11.34
106,306,506,706,906,1306,1506,1706	2BHK	68.59	5.03	1.40	12.80

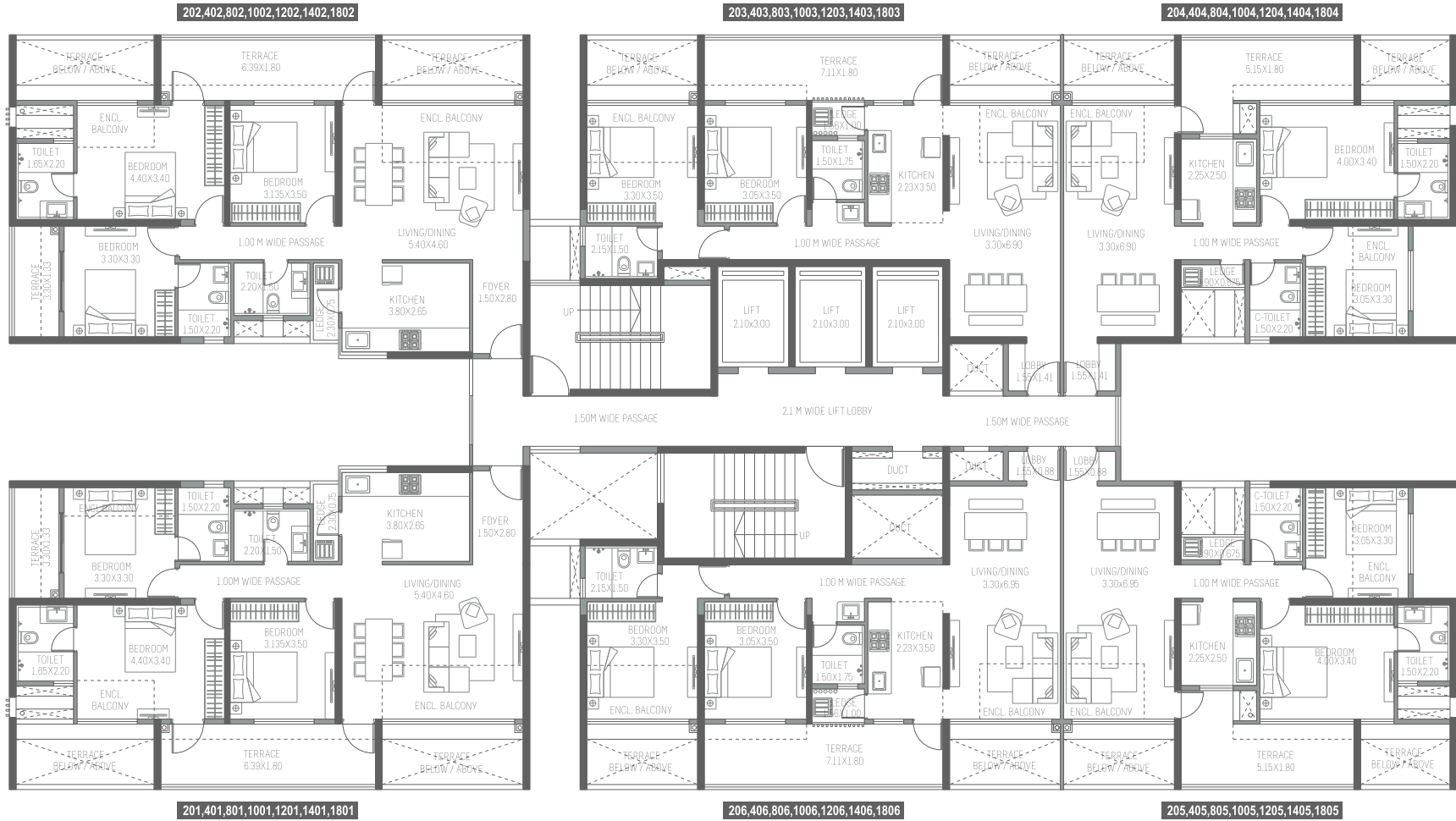
FACTOR OF CONVERSION FROM SQ.M. TO SQ.FT. IS 10.764.



*NOTE: "carpet area" means the net usable floor area of an apartment, excluding the area covered by the external walls, areas under services shafts, exclusive balcony or verandah area and exclusive open terrace area, but includes the area covered by the internal partition walls of the apartment. Internal columns / shear walls embedded as a part of internal partition walls are included in carpet area.

BROOKLYN

2ND, 4TH, 8TH, 10TH, 12TH, 14TH & 18TH FLOOR PLAN



AREA STATEMENT (IN SQ.M.)

FLAT NO	FLAT TYPE	CARPET AREA	ENCLOSED BALCONY AREA	LEDGE AREA	TERRACE AREA
201,401,801,1001,1201,1401,1801	3BHK	83.69	12.16	1.80	16.47
202,402,802,1002,1202,1402,1802	3BHK	85.84	10.01	1.80	16.47
203,403,803,1003,1203,1403,1803	2BHK	64.65	9.68	1.40	12.93

FACTOR OF CONVERSION FROM SQ.M. TO SQ.FT. IS 10.764.

AREA STATEMENT (IN SQ.M.)

FLAT NO	FLAT TYPE	CARPET AREA	ENCLOSED BALCONY AREA	LEDGE AREA	TERRACE AREA
204,404,804,1004,1204,1404,1804	2BHK	58.45	9.52	1.40	10.99
205,405,805,1005,1205,1405,1805	2BHK	57.82	9.40	1.39	10.99
206,406,806,1006,1206,1406,1806	2BHK	64.38	9.24	1.40	12.93

FACTOR OF CONVERSION FROM SQ.M. TO SQ.FT. IS 10.764.



*NOTE: "carpet area" means the net usable floor area of an apartment, excluding the area covered by the external walls, areas under services shafts, exclusive balcony or verandah area and exclusive open terrace area, but includes the area covered by the internal partition walls of the apartment. Internal columns / shear walls embedded as a part of internal partition walls are included in carpet area.

BROOKLYN

11TH FLOOR PLAN



AREA STATEMENT (IN SQ.M.)

FLAT NO	FLAT TYPE	CARPET AREA	ENCLOSED BALCONY AREA	LEDGE AREA	TERRACE AREA
1101	3BHK	79.86	15.97	1.80	15.83
1102	3BHK	REFUGE			
1103	2BHK	69.32	5.03	1.40	12.80

FACTOR OF CONVERSION FROM SQ.M. TO SQ.FT. IS 10.764.

AREA STATEMENT (IN SQ.M.)

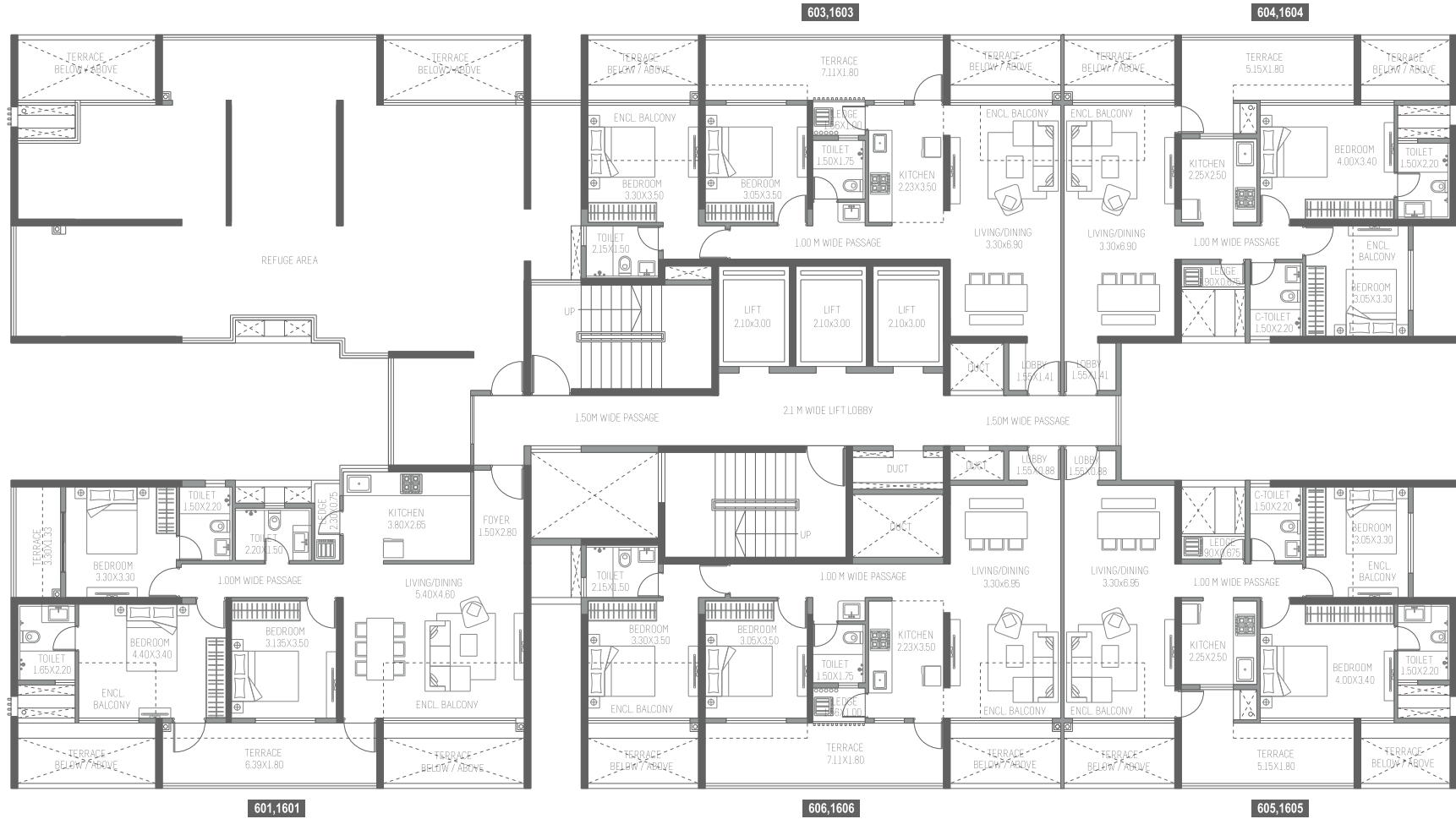
FLAT NO	FLAT TYPE	CARPET AREA	ENCLOSED BALCONY AREA	LEDGE AREA	TERRACE AREA
1104	2BHK	57.57	10.40	1.40	11.34
1105	2BHK	56.49	10.40	1.39	11.34
1106	2BHK	68.59	5.03	1.40	12.80

FACTOR OF CONVERSION FROM SQ.M. TO SQ.FT. IS 10.764.

*NOTE: "carpet area" means the net usable floor area of an apartment, excluding the area covered by the external walls, areas under services shafts, exclusive balcony or verandah area and exclusive open terrace area, but includes the area covered by the internal partition walls of the apartment. Internal columns / shear walls embedded as a part of internal partition walls are included in carpet area.

BROOKLYN

6TH & 16TH FLOOR PLAN



AREA STATEMENT (IN SQ.M.)

FLAT NO	FLAT TYPE	CARPET AREA	ENCLOSED BALCONY AREA	LEDGE AREA	TERRACE AREA
601,1601	3BHK	85.13	10.72	1.80	16.47
602,1602	3BHK	REFUGE			
603,1603	2BHK	64.95	9.40	1.40	12.93

FACTOR OF CONVERSION FROM SQ.M. TO SQ.FT. IS 10.764.

AREA STATEMENT (IN SQ.M.)

FLAT NO	FLAT TYPE	CARPET AREA	ENCLOSED BALCONY AREA	LEDGE AREA	TERRACE AREA
604,1604	2BHK	58.57	9.40	1.40	10.89
605,1605	2BHK	57.82	9.40	1.39	10.89
606,1606	2BHK	64.22	9.40	1.40	12.93

FACTOR OF CONVERSION FROM SQ.M. TO SQ.FT. IS 10.764.

*NOTE: "carpet area" means the net usable floor area of an apartment, excluding the area covered by the external walls, areas under services shafts, exclusive balcony or verandah area and exclusive open terrace area, but includes the area covered by the internal partition walls of the apartment. Internal columns / shear walls embedded as a part of internal partition walls are included in carpet area.

BROOKLYN

19TH FLOOR PLAN | DUPLEX LOWER LEVEL



AREA STATEMENT (IN SQ.M.)

FLAT NO	FLAT TYPE	CARPET AREA	ENCLOSED BALCONY AREA	LEDGE AREA	TERRACE AREA
1901	4 BHK DUPLEX	147.74	25.31	1.80	28.43
1902	4 BHK DUPLEX	147.47	25.31	1.80	28.43

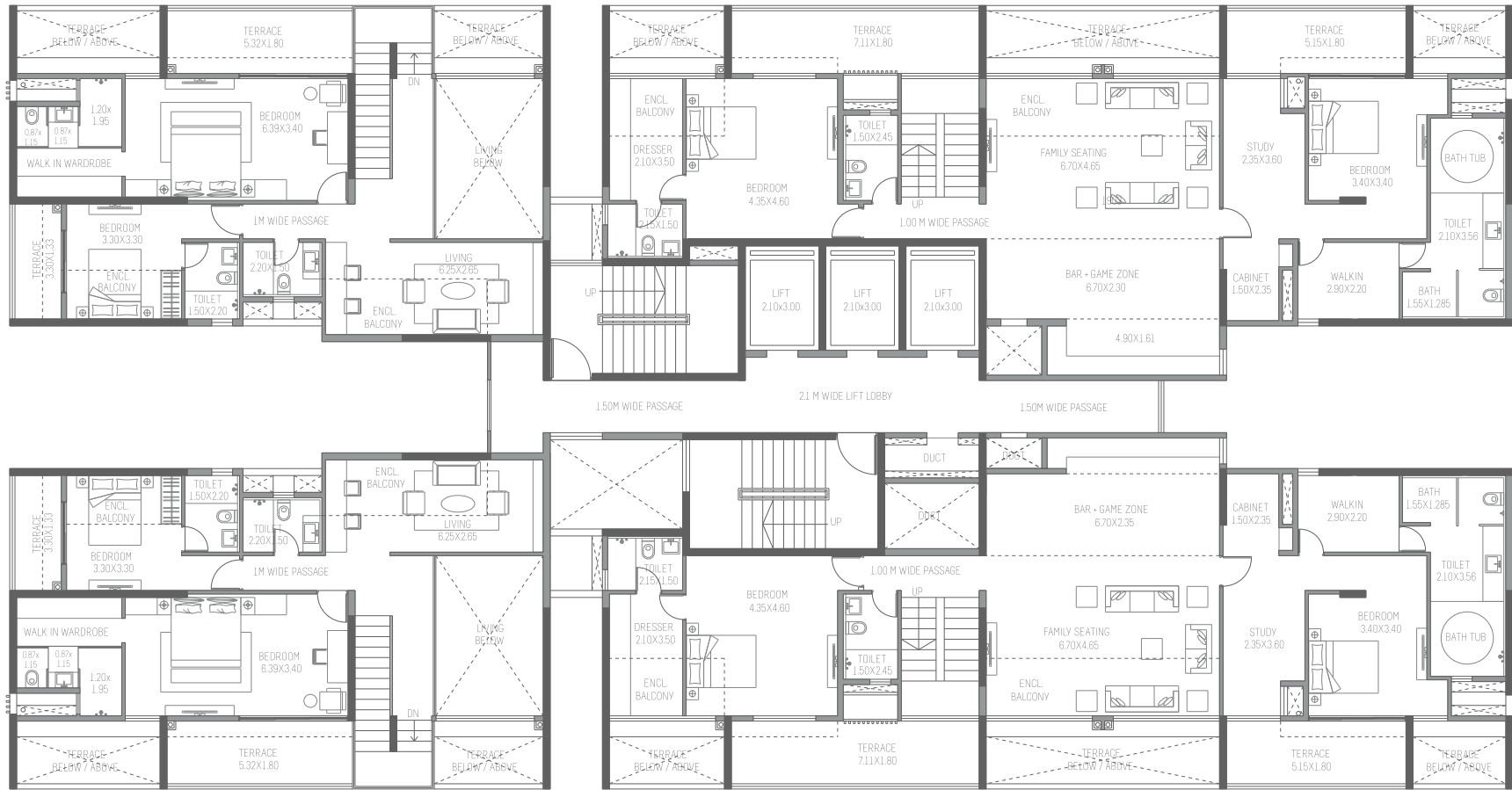
FACTOR OF CONVERSION FROM SQ.M. TO SQ.FT. IS 10.764.



*NOTE: "carpet area" means the net usable floor area of an apartment, excluding the area covered by the external walls, areas under services shafts, exclusive balcony or verandah area and exclusive open terrace area, but includes the area covered by the internal partition walls of the apartment. Internal columns / shear walls embedded as a part of internal partition walls are included in carpet area.

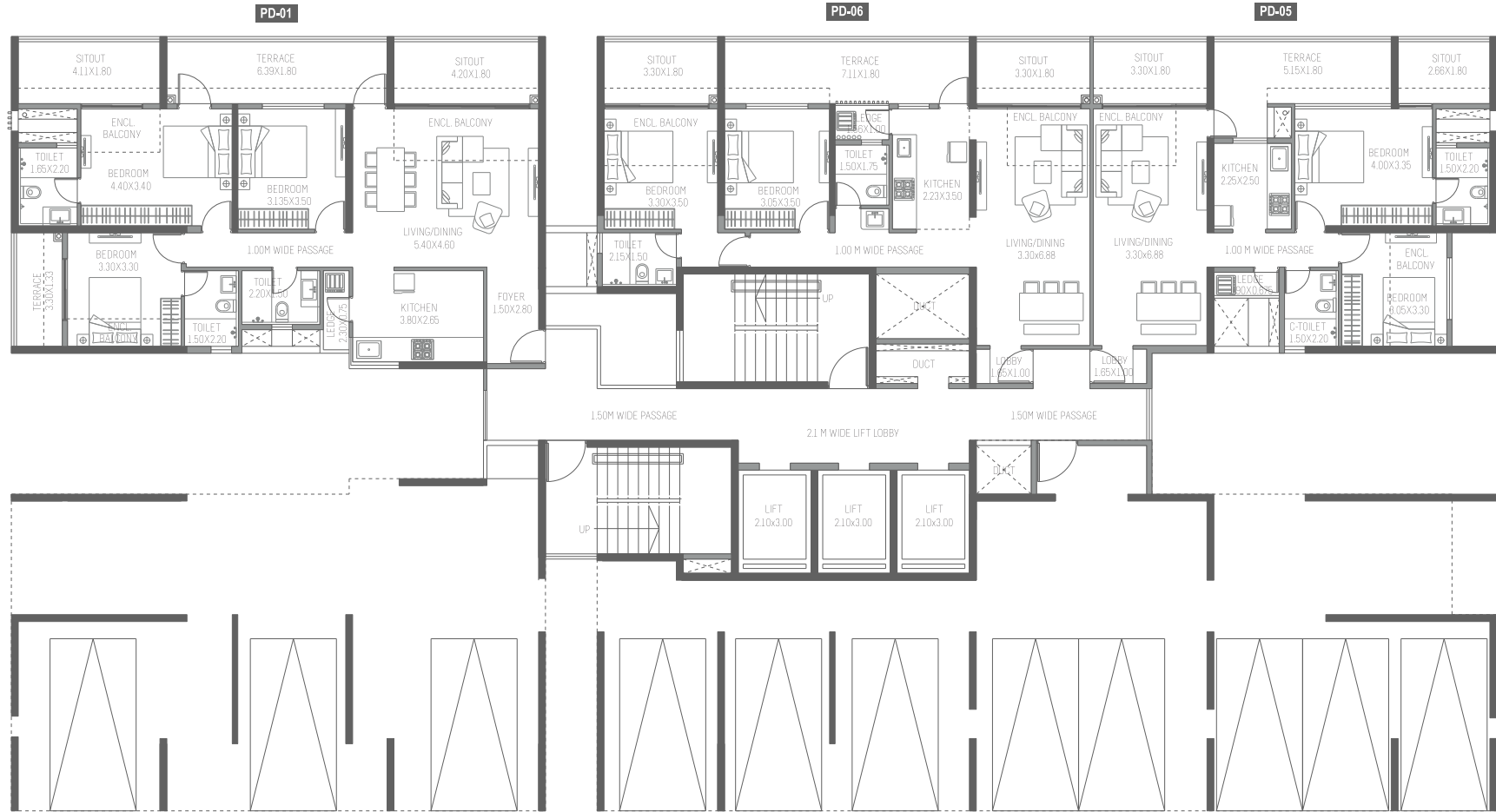
BROOKLYN

20TH FLOOR PLAN | DUPLEX UPPER LEVEL



*NOTE: "carpet area" means the net usable floor area of an apartment, excluding the area covered by the external walls, areas under services shafts, exclusive balcony or verandah area and exclusive open terrace area, but includes the area covered by the internal partition walls of the apartment. Internal columns / shear walls embedded as a part of internal partition walls are included in carpet area.

MANHATTAN
STILT FLOOR PLAN



AREA STATEMENT (IN SQ.M.)

FLAT NO	FLAT TYPE	CARPET AREA	ENCLOSED BALCONY AREA	LEDGE AREA	TERRACE AREA	SITOUT TERRACE
PD - 01	3BHK	84.02	11.83	1.80	16.47	15.82
PD - 06	2BHK	64.04	9.40	1.40	12.93	12.79
PD - 05	2BHK	57.32	9.40	1.39	10.99	11.34

FACTOR OF CONVERSION FROM SQ.M. TO SQ.FT. IS 10.764.



*NOTE: "carpet area" means the net usable floor area of an apartment, excluding the area covered by the external walls, areas under services shafts, exclusive balcony or verandah area and exclusive open terrace area, but includes the area covered by the internal partition walls of the apartment. Internal columns / shear walls embedded as a part of internal partition walls are included in carpet area.

MANHATTAN

1ST, 3RD, 5TH, 7TH, 9TH, 13TH, 15TH & 17TH FLOOR PLAN



AREA STATEMENT (IN SQ.M.)

FLAT NO	FLAT TYPE	CARPET AREA	ENCLOSED BALCONY AREA	LEDGE AREA	TERRACE AREA
101,301,501,701,901,1301,1501,1701	3BHK	80.56	15.29	1.80	15.82
102,302,502,702,902,1302,1502,1702	3BHK	80.51	15.29	1.80	15.82
103,303,503,703,903,1303,1503,1703	2BHK	69.32	5.03	1.40	12.79

FACTOR OF CONVERSION FROM SQ.M. TO SQ.FT. IS 10.764.

AREA STATEMENT (IN SQ.M.)

FLAT NO	FLAT TYPE	CARPET AREA	ENCLOSED BALCONY AREA	LEDGE AREA	TERRACE AREA
104,304,504,704,904,1304,1504,1704	2BHK	57.24	10.39	1.39	11.34
105,305,505,705,905,1305,1505,1705	2BHK	56.65	10.39	1.39	11.34
106,306,506,706,906,1306,1506,1706	2BHK	68.42	5.03	1.40	12.79

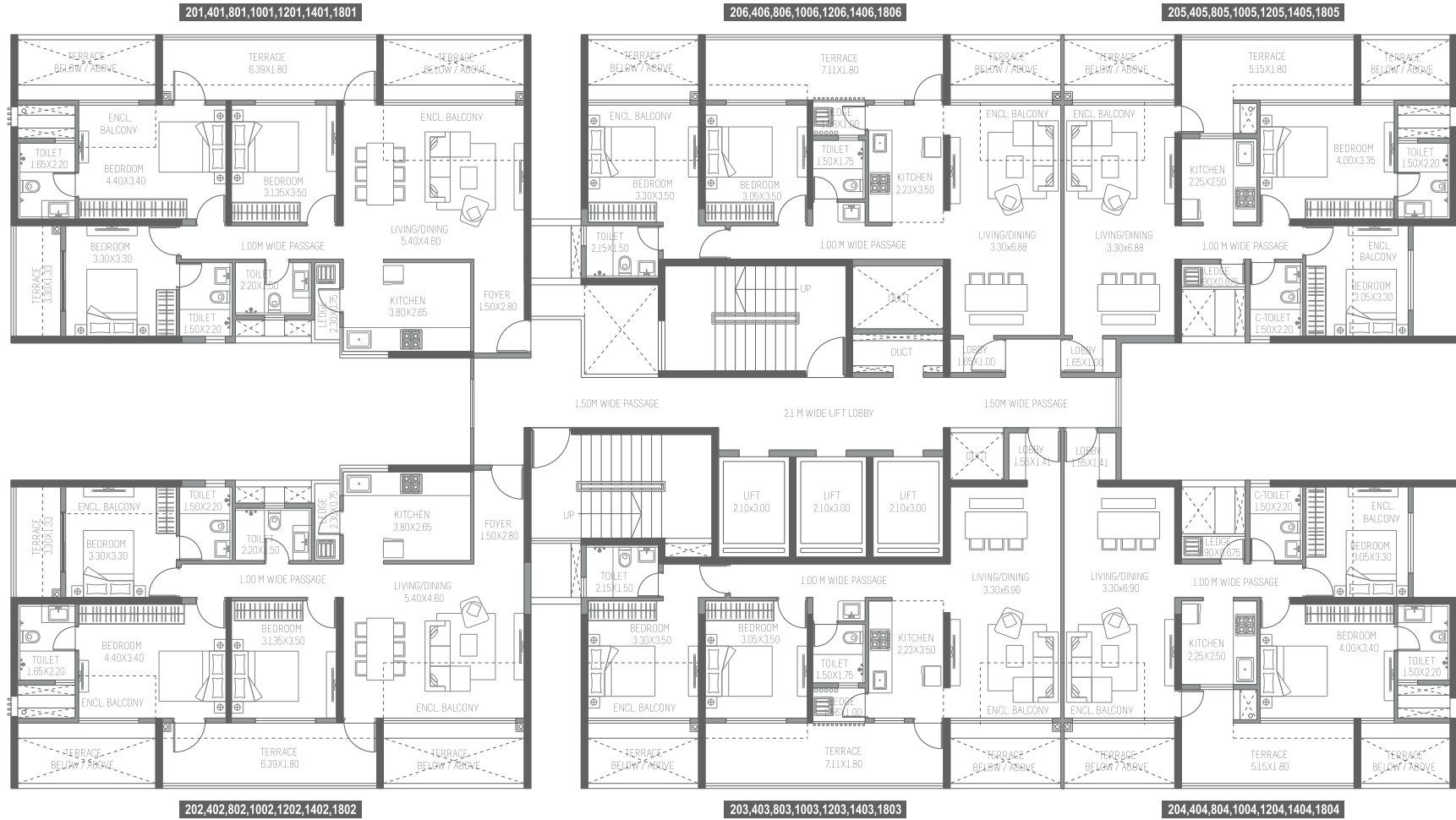
FACTOR OF CONVERSION FROM SQ.M. TO SQ.FT. IS 10.764.



*NOTE: "carpet area" means the net usable floor area of an apartment, excluding the area covered by the external walls, areas under services shafts, exclusive balcony or verandah area and exclusive open terrace area, but includes the area covered by the internal partition walls of the apartment. Internal columns / shear walls embedded as a part of internal partition walls are included in carpet area.

MANHATTAN

2ND, 4TH, 8TH, 10TH, 12TH, 14TH & 18TH FLOOR PLAN



AREA STATEMENT (IN SQ.M.)

FLAT NO	FLAT TYPE	CARPET AREA	ENCLOSED BALCONY AREA	LEDGE AREA	TERRACE AREA
201.401.801.1001.1201.1401.1801	3BHK	86.08	9.82	1.80	16.47
202.402.802.1002.1202.1402.1802	3BHK	83.39	12.46	1.80	16.47
203.403.803.1003.1203.1403.1803	2BHK	64.95	9.40	1.40	12.93

FACTOR OF CONVERSION FROM SQ.M. TO SQ.FT. IS 10.764.

AREA STATEMENT (IN SQ.M.)

FLAT NO	FLAT TYPE	CARPET AREA	ENCLOSED BALCONY AREA	LEDGE AREA	TERRACE AREA
204.404.804.1004.1204.1404.1804	2BHK	58.22	9.40	1.39	10.98
205.405.805.1005.1205.1405.1805	2BHK	57.65	9.40	1.39	10.98
206.406.806.1006.1206.1406.1806	2BHK	64.04	9.40	1.40	12.93

FACTOR OF CONVERSION FROM SQ.M. TO SQ.FT. IS 10.764.



*NOTE: "carpet area" means the net usable floor area of an apartment, excluding the area covered by the external walls, areas under services shafts, exclusive balcony or verandah area and exclusive open terrace area, but includes the area covered by the internal partition walls of the apartment. Internal columns / shear walls embedded as a part of internal partition walls are included in carpet area.

MANHATTAN

11TH FLOOR PLAN



AREA STATEMENT (IN SQ.M.)

FLAT NO	FLAT TYPE	CARPET AREA	ENCLOSED BALCONY AREA	LEDGE AREA	TERRACE AREA
1101	3BHK	79.87	15.98	1.80	15.82
1102	3BHK	REFUGE			
1103	2BHK	69.32	5.03	1.40	12.79

FACTOR OF CONVERSION FROM SQ.M. TO SQ.FT. IS 10.764.

AREA STATEMENT (IN SQ.M.)

FLAT NO	FLAT TYPE	CARPET AREA	ENCLOSED BALCONY AREA	LEDGE AREA	TERRACE AREA
1104	2BHK	57.24	10.39	1.39	11.34
1105	2BHK	56.65	10.39	1.39	11.34
1106	2BHK	68.42	5.03	1.40	12.79

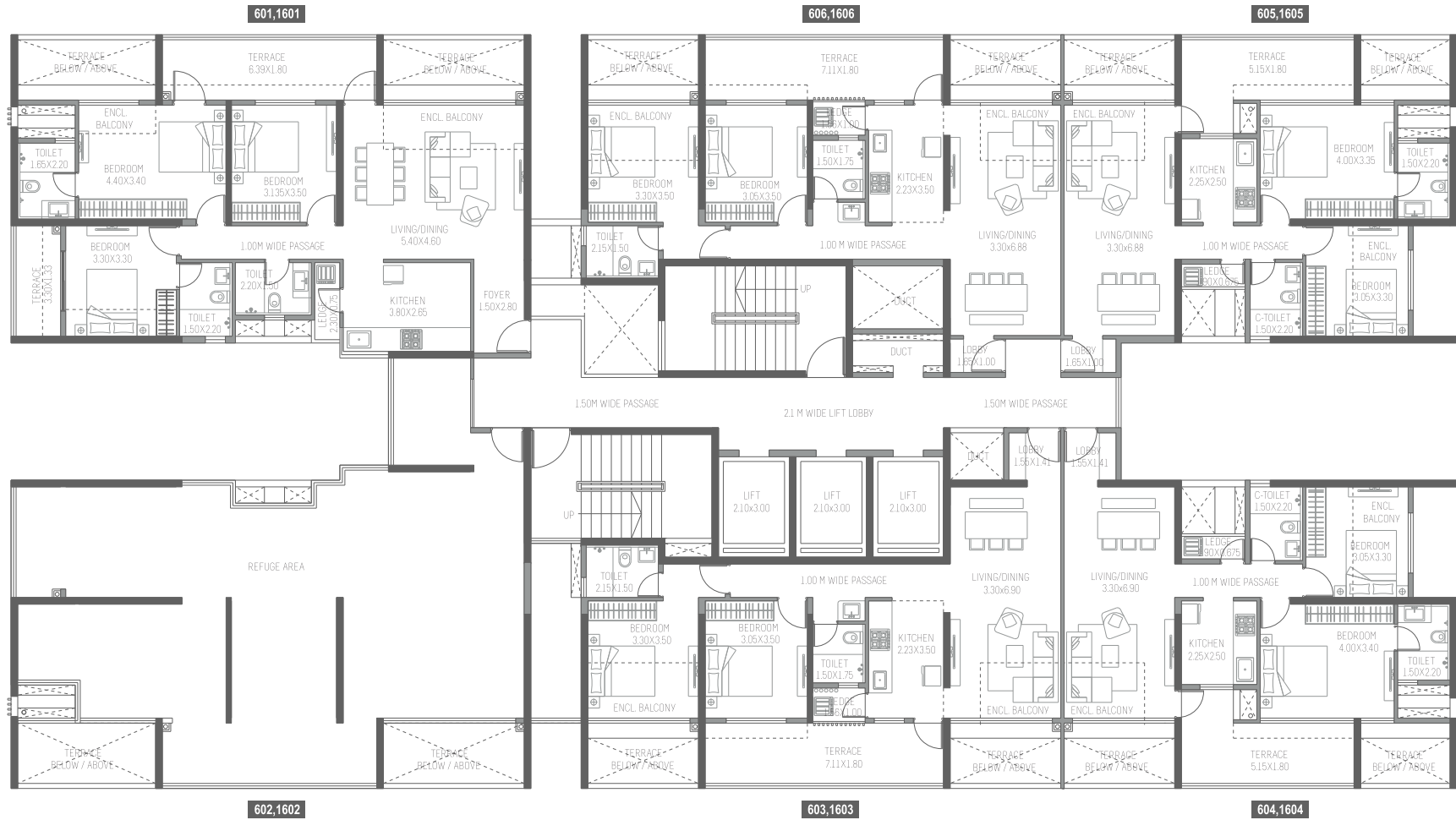
FACTOR OF CONVERSION FROM SQ.M. TO SQ.FT. IS 10.764.



*NOTE: "carpet area" means the net usable floor area of an apartment, excluding the area covered by the external walls, areas under services shafts, exclusive balcony or verandah area and exclusive open terrace area, but includes the area covered by the internal partition walls of the apartment. Internal columns / shear walls embedded as a part of internal partition walls are included in carpet area.

MANHATTAN

6TH & 16TH FLOOR PLAN



AREA STATEMENT (IN SQ.M.)

FLAT NO	FLAT TYPE	CARPET AREA	ENCLOSED BALCONY AREA	LEDGE AREA	TERRACE AREA
601,1601	3BHK	85.77	10.14	1.80	16.47
602,1602	3BHK	REFUGE			
603,1603	2BHK	64.95	9.40	1.40	12.93

FACTOR OF CONVERSION FROM SQ.M. TO SQ.FT. IS 10.764.

AREA STATEMENT (IN SQ.M.)

FLAT NO	FLAT TYPE	CARPET AREA	ENCLOSED BALCONY AREA	LEDGE AREA	TERRACE AREA
604,1604	2BHK	58.22	9.40	1.39	10.98
605,1605	2BHK	57.65	9.40	1.39	10.98
606,1606	2BHK	64.04	9.40	1.40	12.93

FACTOR OF CONVERSION FROM SQ.M. TO SQ.FT. IS 10.764.



*NOTE: "carpet area" means the net usable floor area of an apartment, excluding the area covered by the external walls, areas under services shafts, exclusive balcony or verandah area and exclusive open terrace area, but includes the area covered by the internal partition walls of the apartment. Internal columns / shear walls embedded as a part of internal partition walls are included in carpet area.

MANHATTAN

19TH FLOOR PLAN | DUPLEX LOWER LEVEL



AREA STATEMENT (IN SQ.M.)

FLAT NO	FLAT TYPE	CARPET AREA	ENCLOSED BALCONY AREA	LEDGE AREA	TERRACE AREA
1901	4BHK-DUPLEX	155.50	26.39	1.80	28.43
1902	4BHK-DUPLEX	155.65	26.39	1.80	28.43

FACTOR OF CONVERSION FROM SQ.M. TO SQ.FT. IS 10.764.

AREA STATEMENT (IN SQ.M.)

FLAT NO	FLAT TYPE	CARPET AREA	ENCLOSED BALCONY AREA	LEDGE AREA	TERRACE AREA
1903	4BHK	135.34	16.53	2.82	24.31
1904	4BHK	132.52	16.53	2.82	24.31

FACTOR OF CONVERSION FROM SQ.M. TO SQ.FT. IS 10.764.



*NOTE: "carpet area" means the net usable floor area of an apartment, excluding the area covered by the external walls, areas under services shafts, exclusive balcony or verandah area and exclusive open terrace area, but includes the area covered by the internal partition walls of the apartment. Internal columns / shear walls embedded as a part of internal partition walls are included in carpet area.

MANHATTAN

20TH FLOOR PLAN | DUPLEX UPPER LEVEL



AREA STATEMENT (IN SQ.M.)

FLAT NO	FLAT TYPE	CARPET AREA	ENCLOSED BALCONY AREA	LEDGE AREA	TERRACE AREA
2003	4BHK	135.39	16.49	2.82	22.62
2004	4BHK	132.56	16.49	2.82	22.62

FACTOR OF CONVERSION FROM SQ.M. TO SQ.FT. IS 10.764.



*NOTE: "carpet area" means the net usable floor area of an apartment, excluding the area covered by the external walls, areas under services shafts, exclusive balcony or verandah area and exclusive open terrace area, but includes the area covered by the internal partition walls of the apartment. Internal columns / shear walls embedded as a part of internal partition walls are included in carpet area.

INSPIRED BY YOU

Over three decades' track record of customer care and trust has seen Paranjape Schemes Construction Limited evolve into a multi-dimensional, multi-locational real estate company that stays in tune with the changing customers' needs and aspirations.

Over 171 completed projects are home to more than 9000 happy families that form 'The Happiness Network', a happy, vibrant community where neighbors become friends and friends become family!

28 ongoing projects across 8 cities encompass a wide range of offerings including 1 to 5 bedroom apartments, bungalows, row houses, penthouses, shops, offices, malls, multiplex, hotel, schools, senior citizen homes... products that touch every aspect of human life.

Every single activity at Paranjape Schemes is guided by our core values that form an integral part of our DNA -

- Transparent • Dependable • Rooted • Progressive
- Excellence • Caring • Inclusive



A PROJECT BY: LAVIM DEVELOPERS

Corporate Office: 'PSC House', Dr. Ketkar Road,
Off Prabhat Road, Erandawane, Pune - 4, India.



PARANJAPE SCHEMES CONSTRUCTION LTD.

Site Office: Survey no. 185, at Wakad, Mulshi, Pune-57.
For enquiry visit Blue Ridge Office: Blue Ridge, Near Cognizant,
Rajiv Gandhi Infotech Park - Phase I, Hinjawadi, Pune-57.

MAHARASHTRA | KARNATAKA | GUJARAT | USA



Maharera.mahaonline.gov.in | Broadway - Brooklyn,
Manhattan - P52100016356

"This perspective image may not be to the scale or may not represent actual facade / elevation. The details of windows, paints, elevation features, landscaping, ground development, trees etc. in this perspective is an artist's impression and would be different to actual construction of building and development. The viewers affirm that he / she has not taken his / her decision of purchase/booking by viewing this perspective. The company is not responsible for the action of the viewer's booking / purchasing a unit relying on this perspective." 1 Pictorial representation is used to simply convey the essence of suggested lifestyle.