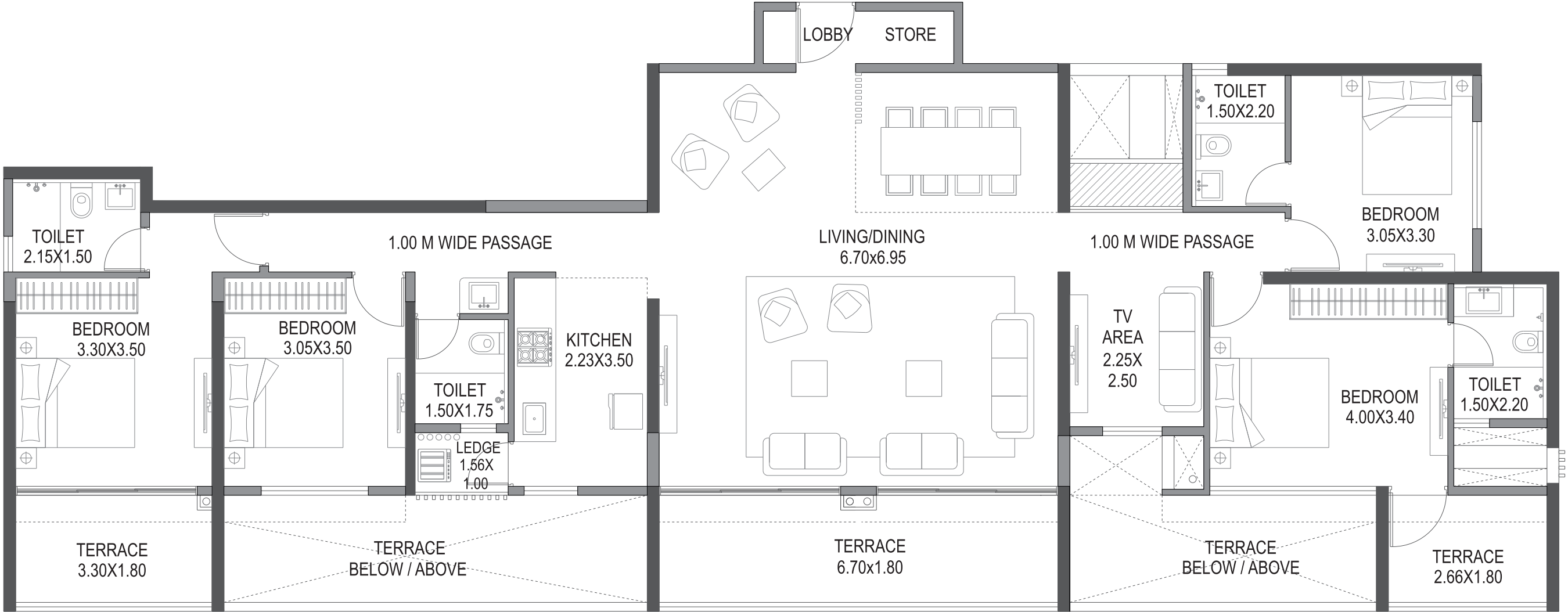


BROOKLYN (WING - A)
15TH FLOOR PLAN



1505 & 1506



4 BHK LAYOUT AFTER COMBINE 2 FLATS OF 2 BHK

AREA STATEMENT (IN SQ.M.)

FLAT NO	FLAT TYPE	CARPET AREA	ENCLOSED BALCONY AREA	LEDGE AREA	TERRACE AREA
1505 & 1506	4BHK	127.59	15.42	2.80	24.31

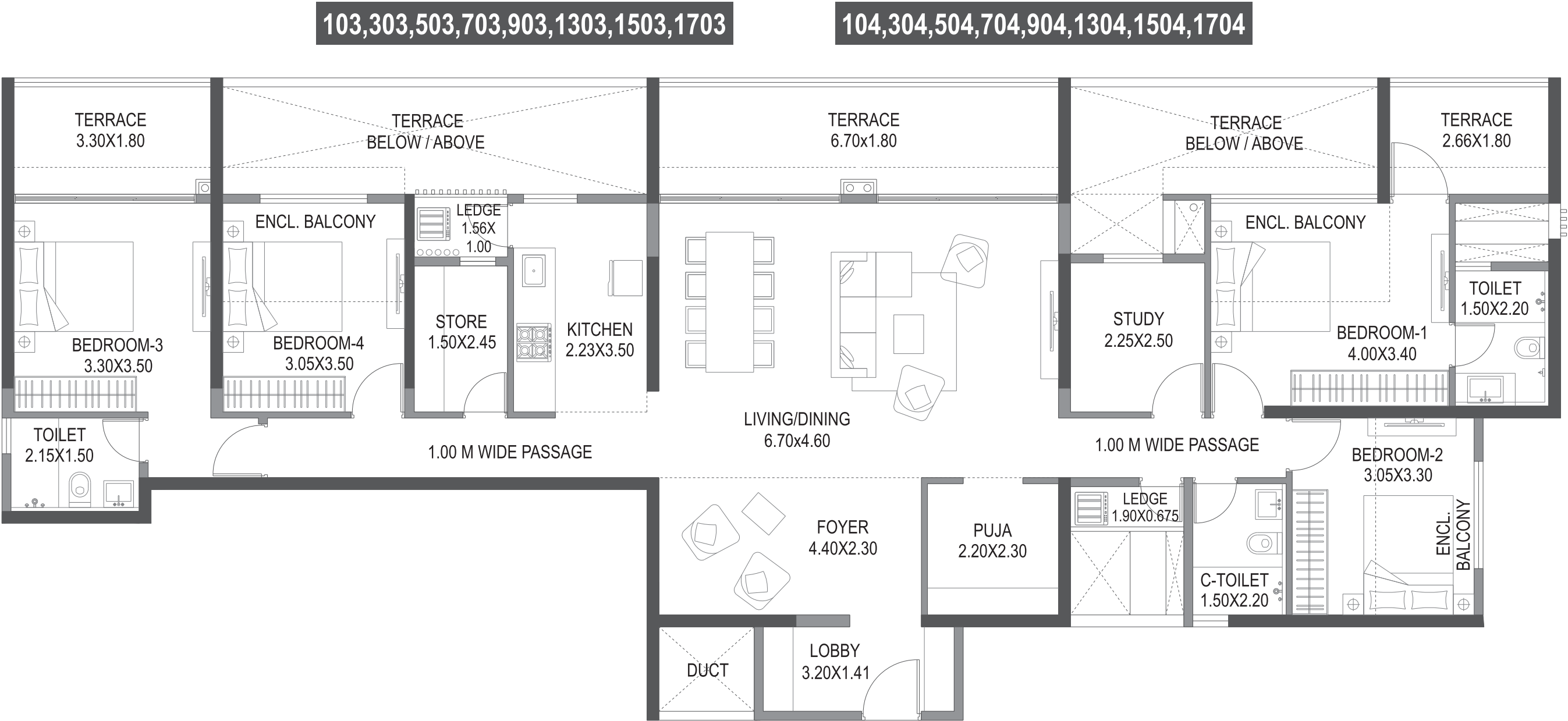
FACTOR OF CONVERSION FROM SQ.M. TO SQ.FT. IS 10.764.



PARANJAPE
BROADWAY
PREMIUM RESIDENCES AT **WAKAD**

*NOTE: "carpet area" means the net usable floor area of an apartment, excluding the area covered by the external walls, areas under services shafts, exclusive balcony or verandah area and exclusive open terrace area, but includes the area covered by the internal partition walls of the apartment. Internal columns / shear walls embedded as a part of internal partition walls are included in carpet area.

BROOKLYN (WING - A)
1ST, 3RD, 5TH, 7TH, 9TH, 13TH, 15TH & 17TH FLOOR PLAN



4 BHK LAYOUT AFTER COMBINE 2 FLATS OF 2 BHK

AREA STATEMENT (IN SQ.M.)

FLAT NO	FLAT TYPE	CARPET AREA	ENCLOSED BALCONY AREA	LEDGE AREA	TERRACE AREA
103, 303, 503, 703, 903, 1303, 1503, 1703	4BHK	127.59	15.42	2.80	24.31
104, 304, 504, 704, 904, 1304, 1504, 1704					

FACTOR OF CONVERSION FROM SQ.M. TO SQ.FT. IS 10.764.

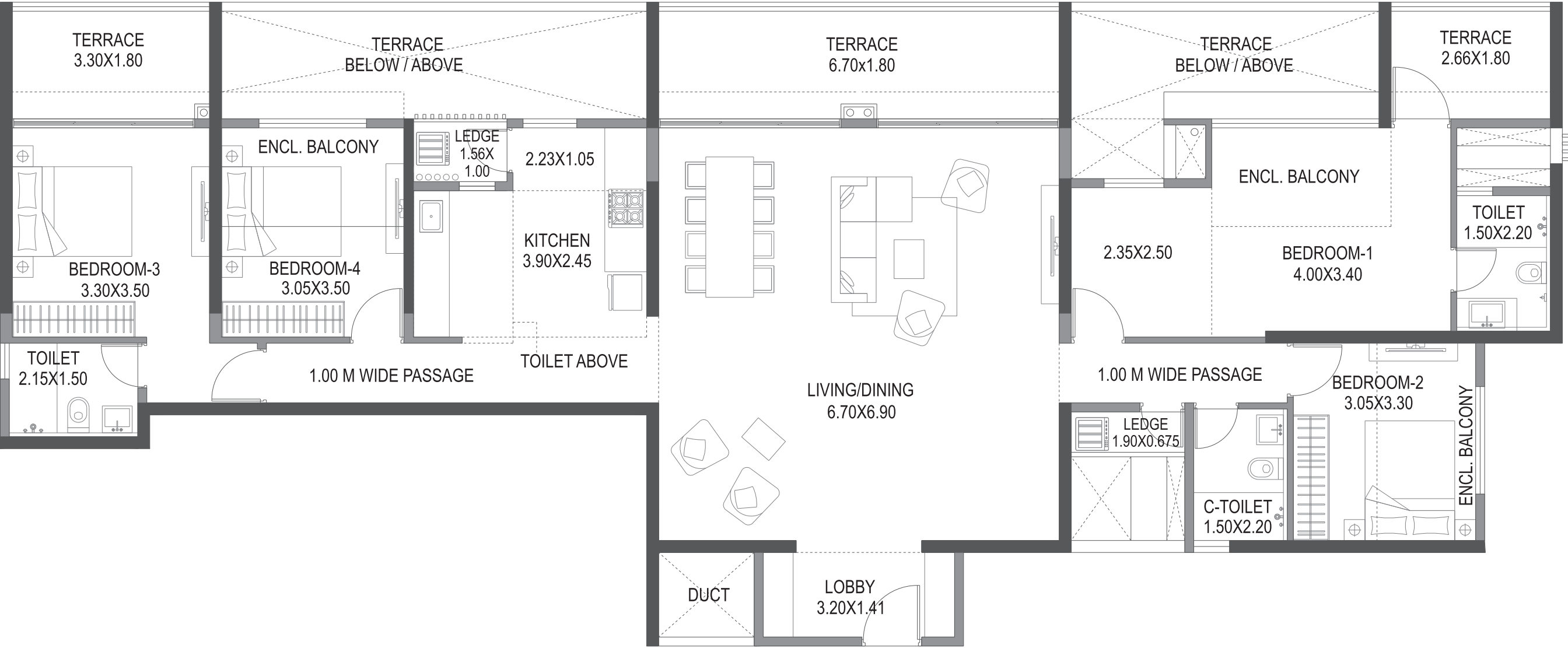


PARANJAPE
BROADWAY
PREMIUM RESIDENCES AT WAKAD

*NOTE: "carpet area" means the net usable floor area of an apartment, excluding the area covered by the external walls, areas under services shafts, exclusive balcony or verandah area and exclusive open terrace area, but includes the area covered by the internal partition walls of the apartment. Internal columns / shear walls embedded as a part of internal partition walls are included in carpet area.

BROOKLYN (WING - A)
15TH FLOOR PLAN

1503 & 1504



4 BHK LAYOUT AFTER COMBINE 2 FLATS OF 2 BHK

AREA STATEMENT (IN SQ.M.)

FLAT NO	FLAT TYPE	CARPET AREA	ENCLOSED BALCONY AREA	LEDGE AREA	TERRACE AREA
1503 & 1504	4BHK	127.59	15.42	2.80	24.31

FACTOR OF CONVERSION FROM SQ.M. TO SQ.FT. IS 10.764.

PARANJAPE
BROADWAY
PREMIUM RESIDENCES AT WAKAD

*NOTE: "carpet area" means the net usable floor area of an apartment, excluding the area covered by the external walls, areas under services shafts, exclusive balcony or verandah area and exclusive open terrace area, but includes the area covered by the internal partition walls of the apartment. Internal columns / shear walls embedded as a part of internal partition walls are included in carpet area.