

PARANJAPE



FOREST TRAILS
— TOWNSHIP —

PRESENTS

EVERGLADES
SMART 1 BR HOMES

EXPERIENCE NATURE



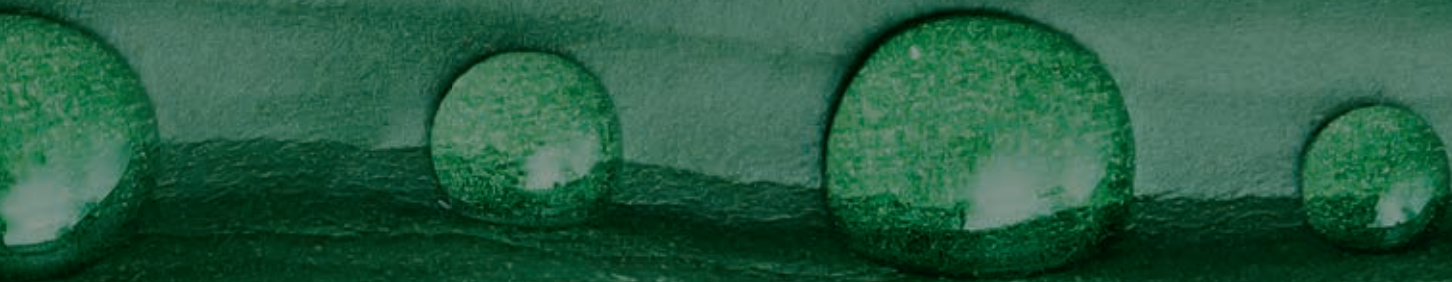
THIS IS LIVING

Come home to Forest Trails Township, India's premier nature-centric, amenities rich, **170 acre** sustainable township at Bhugaon, Pune. Join a beautiful vibrant community of hills, trees, birds, flowers and like-minded biophiles. Well connected with Pune's infrastructure Forest Trails weaves nature and modern lifestyle together to create a balance that you have never felt before.



EXPER
NAT

SCIENCE
CULTURE



EVERGLADES LAYOUT



LEGEND

- | | | | | | |
|-----|----------------------------|-----|-------------------------------|-----|-------------------------------|
| 1. | DRIVEWAY FROM SALES OFFICE | 14. | CHILDREN'S PLAY AREA | 27. | MINI FOOTBALL COURT |
| 2. | DRIVEWAY TO ATHASHRI | 15. | TODDLERS PLAY AREA | 28. | CHILDREN'S PLAY AREA |
| 3. | DRIVEWAY TO EVERGLADES | 16. | SEATING COURT | 29. | SWIMMING POOL |
| 4. | TEMPLE | 17. | TREE COURT | 30. | KIDS POOL |
| 5. | ENTRANCE TO EVERGLADES | 18. | SEATING AREA | 31. | SERVICE COUNTER AREA |
| 6. | SECURITY CABIN | 19. | PLANTATION | 32. | CLUB HOUSE |
| 7. | VISITORS PARKING | 20. | DRIVEWAY | 33. | PARTY LAWN AREA |
| 8. | PARKING AREA | 21. | ENTRANCE TO OPEN SPACE | 34. | SEATING COURTS |
| 9. | SEATING COURTS | 22. | ORGANIC FARMING | 35. | ENTRANCE FROM FUTURE BUILDING |
| 10. | PAVILLION FOR EXERCISE | 23. | TREE DECK | 36. | SKATING RINK |
| 11. | OUTDOOR EXERCISE STATION | 24. | ENTRANCE FROM FUTURE BUILDING | 37. | EVERGLADES H3 |
| 12. | SCULPTURE | 25. | FESTIVE COURT | 38. | EVERGLADES H4 |
| 13. | SAND PIT | 26. | OUTDOOR EXERCISE STATION | 39. | FUTURE DEVELOPMENT |



ARTIST IMPRESSION

EVERGLADES

At Everglades everything is inviting. Each of these magnificent 13-storey buildings comprise of smartly designed 1 BR apartments, that offer stunning views of the valley and lake. Well thought-out design bestows good light and ventilation throughout the apartment, including the kitchen.

A beautiful, tree-lined driveway provides the perfect backdrop and enhances the elegant facade of Everglades. All apartments are endowed with cosy balconies on which residents can view the most wonderful sunrise and sunsets, uplifting their spirits.



ARTIST IMPRESSION

EVERGLADES AMENITIES

- Children's play area
- Toddler's play area
- Seating courts
- Pavilion for yoga meditation
- Outdoor exercise station
- Landscape area
- Multi-level car parking
- Generator backup to lift, water pumps & common lights
- Piped gas system
- Digital society management software
- CCTV camera system

SECTOR AMENITIES

- Clubhouse with
 - Gymnasium
 - Multipurpose hall
 - Indoor games
 - Swimming pool with kids pool
- Party lawn
- Tree deck
- Organic farming
- Pavilion
- Mini football court
- Festive court



- Homes are prudently designed to accommodate all necessary furniture and fixture required for modern living
- All homes are spacious, with light and ventilation streaming through the rooms and kitchens
- Bath suites are flexible in design and can be customized to suit individual requirements

- Covered balconies connected to living rooms to ensure optimal space utilization
- Stunning views of the township and Manas lake.

- Thoughtfully located kitchen for better light & ventilation
- Kitchen is adequate in size to fit in a breakfast counter

ISOMETRIC VIEW



SALIENT FEATURES

- Elegant facade
- Approach is through a beautiful tree-lined driveway
- Well-lit entrance lobby and corridors
- Flexibility to customize bath suite & utility areas
- Seating area at the podium designed for a unique community living experience.



FLOORING AND DADO WORK

- Vitrified floor tiles for living/ dining, kitchen & bedroom
- Ceramic tiles for toilet, utility & balcony
- Dado tiles in toilet up to lintel level
- Dado tiles above cooking platform up to lintel level in kitchen

KITCHEN

- Black granite kitchen platform with stainless steel sink
- Modular kitchen cabinets below platform

DOORS

- All doors will be flush door with laminate on both sides of the door
- Powder coated aluminium sliding shutters with glass for balcony doors

WINDOWS

- Powder coated aluminium sliding windows with MS safty grills

PAINTING AND FINISHES

- Gypsum punning and internal emulsion paint for all internal walls

ELECTRICAL AND PLUMBING

- Concealed wiring with modular switches
- Concealed plumbing with C.P. plumbing fixtures
- Electrical and plumbing provision for water heater and electrical provision for exhaust fan in toilet
- Electrical and plumbing provision for water purifier and electrical provision for exhaust fan in kitchen
- T.V. point in living room
- A.C. point in bedroom

FIRST FLOOR PLAN



AREA STATEMENT IN SQ.M

FLAT NO.	TYPE	CARPET	UTILITY	BALCONY	TERRACE
101	1BHK	40.88	2.29	3.19	26.38
102	1BHK	40.01	2.00	3.19	25.87
103	1BHK	40.10	2.03	3.19	64.57
104	1BHK	40.87	2.29	3.19	65.94
105	1BHK	40.60	2.03	3.19	65.26
106	1BHK	40.60	2.03	3.19	65.26
107	1BHK	40.87	2.29	3.19	65.94
108	1BHK	40.10	2.03	3.19	84.16
109	1BHK	40.01	2.00	3.19	33.21
110	1BHK	40.88	2.29	3.19	26.38

FACTORS OF CONVERSION FROM SQ.M TO SQ.FT IS 10.764

NOTE: "CARPET AREA" MEANS THE NET USABLE FLOOR AREA OF AN APARTMENT, EXCLUDING THE AREA COVERED BY THE EXTERNAL WALLS, AREAS UNDER SERVICE SHAFTS, EXCLUSIVE BALCONY OR VERANDAH AREA AND EXCLUSIVE OPEN TERRACE AREA, BUT INCLUDES THE AREA COVERED BY THE INTERNAL PARTITION WALLS OF THE APARTMENT, INTERNAL COLUMNS/SHEAR WALLS EMBEDDED AS A PART OF INTERNAL PARTITION WALLS ARE INCLUDED IN CARPET AREA.

KEY PLAN

H3 H4



AREA STATEMENT IN SQ.M



FLAT NO.	TYPE	CARPET	UTILITY	BALCONY	TERRACE
101	1BHK	40.88	2.29	3.19	26.38
102	1BHK	40.01	2.00	3.19	33.21
103	1BHK	40.10	2.03	3.19	84.16
104	1BHK	40.87	2.29	3.19	65.94
105	1BHK	40.60	2.03	3.19	65.26
106	1BHK	40.60	2.03	3.19	65.26
107	1BHK	40.87	2.29	3.19	65.94
108	1BHK	40.10	2.03	3.19	64.57
109	1BHK	40.01	2.00	3.19	25.87
110	1BHK	40.88	2.29	3.19	26.38

FACTORS OF CONVERSION FROM SQ.M TO SQ.FT IS 10.764

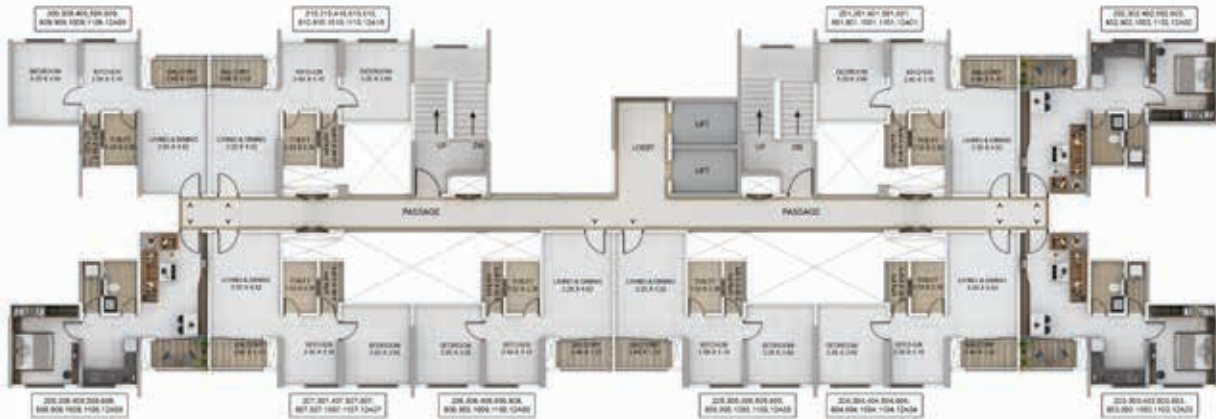
NOTE: "CARPET AREA" MEANS THE NET USABLE FLOOR AREA OF AN APARTMENT, EXCLUDING THE AREA COVERED BY THE EXTERNAL WALLS, AREAS UNDER SERVICE SHAFTS, EXCLUSIVE BALCONY OR VERANDAH AREA AND EXCLUSIVE OPEN TERRACE AREA, BUT INCLUDES THE AREA COVERED BY THE INTERNAL PARTITION WALLS OF THE APARTMENT. INTERNAL COLUMNS/SHEAR WALLS EMBEDDED AS A PART OF INTERNAL PARTITION WALLS ARE INCLUDED IN CARPET AREA.

Disclaimer *

Attached podium terrace for the flat which is shown in green is for presentation purpose only. The finish for podium will have the tiles.

TYPICAL FLOOR PLAN

H3



AREA STATEMENT IN SQ.M

FLAT NO.	TYPE	CARPET	UTILITY	BALCONY
201, 301, 401, 501, 601, 801, 901, 1001, 1101, 12A01	1BHK	40.88	2.29	3.19
210, 310, 410, 510, 610, 810, 910, 1010, 1110, 12A10	1BHK	40.88	2.29	3.19
202, 302, 402, 502, 602, 802, 902, 1002, 1102, 12A02	1BHK	40.01	2.00	3.19
209, 309, 409, 509, 609, 809, 909, 1009, 1109, 12A09	1BHK	40.01	2.00	3.19
203, 303, 403, 503, 603, 803, 903, 1003, 1103, 12A03	1BHK	40.10	2.03	3.19
208, 308, 408, 508, 608, 808, 908, 1008, 1108, 12A08	1BHK	40.10	2.03	3.19
204, 304, 404, 504, 604, 804, 904, 1004, 1104, 12A04	1BHK	40.87	2.29	3.19
207, 307, 407, 507, 607, 807, 907, 1007, 1107, 12A07	1BHK	40.87	2.29	3.19
205, 305, 405, 505, 605, 805, 905, 1005, 1105, 12A05	1BHK	40.60	2.03	3.19
206, 306, 406, 506, 606, 806, 906, 1006, 1106, 12A06	1BHK	40.60	2.03	3.19

FACTORS OF CONVERSION FROM SQ.M TO SQ.FT IS 10.764

NOTE: "CARPET AREA" MEANS THE NET USABLE FLOOR AREA OF AN APARTMENT, EXCLUDING THE AREA COVERED BY THE EXTERNAL WALLS, AREAS UNDER SERVICE SHAFTS, EXCLUSIVE BALCONY OR VERANDAH AREA AND EXCLUSIVE OPEN TERRACE AREA, BUT INCLUDES THE AREA COVERED BY THE INTERNAL PARTITION WALLS OF THE APARTMENT, INTERNAL COLUMNS/SHEAR WALLS EMBEDDED AS A PART OF INTERNAL PARTITION WALLS ARE INCLUDED IN CARPET AREA.



REFUGE FLOOR PLAN (7TH & 12TH FLOOR) H3



AREA STATEMENT IN SQ.M

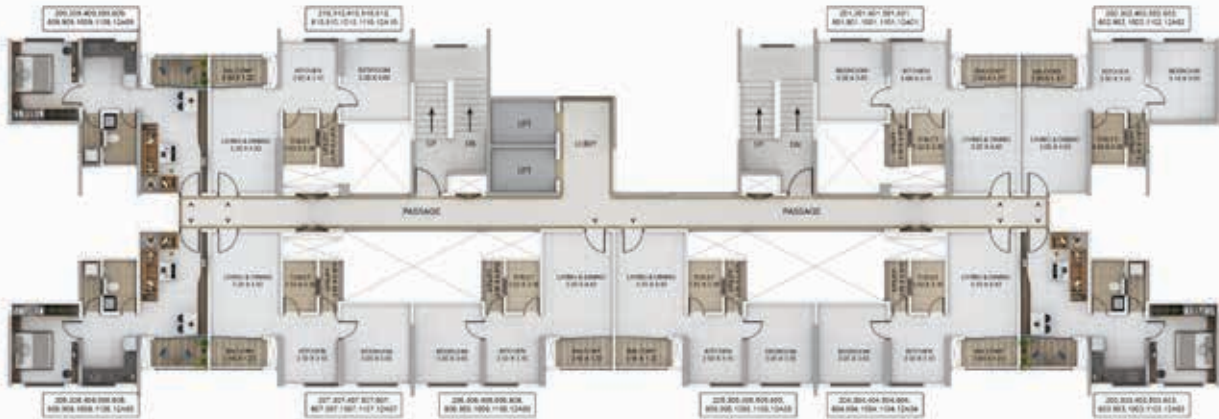
FLAT NO.	TYPE	CARPET	UTILITY	BALCONY
701, 1201	1BHK	40.88	2.29	3.19
710, 1210	1BHK	40.88	2.29	3.19
702, 1202	1BHK	40.01	2.00	3.19
709, 1209	1BHK	40.01	2.00	3.19
703, 1203	1BHK	40.10	2.03	3.19
708, 1208	1BHK	40.10	2.03	3.19
704, 1204	1BHK	40.87	2.29	3.19
707, 1207	1BHK	40.87	2.29	3.19
705, 1205	1BHK	40.60	2.03	3.19
706, 1206	1BHK	40.60	2.03	3.19



FACTORS OF CONVERSION FROM SQ.M TO SQ.FT IS 10.764

NOTE: "CARPET AREA" MEANS THE NET USABLE FLOOR AREA OF AN APARTMENT, EXCLUDING THE AREA COVERED BY THE EXTERNAL WALLS, AREAS UNDER SERVICE SHAFTS, EXCLUSIVE BALCONY OR VERANDAH AREA AND EXCLUSIVE OPEN TERRACE AREA, BUT INCLUDES THE AREA COVERED BY THE INTERNAL PARTITION WALLS OF THE APARTMENT, INTERNAL COLUMNS/SHEAR WALLS EMBEDDED AS A PART OF INTERNAL PARTITION WALLS ARE INCLUDED IN CARPET AREA.

TYPICAL FLOOR PLAN H4



AREA STATEMENT IN SQ.M

FLAT NO.	TYPE	CARPET	UTILITY	BALCONY
201, 301, 401, 501, 601, 801, 901, 1001, 1101, 12A01	1BHK	40.88	2.29	3.19
210, 310, 410, 510, 610, 810, 910, 1010, 1110, 12A10	1BHK	40.88	2.29	3.19
202, 302, 402, 502, 602, 802, 902, 1002, 1102, 12A02	1BHK	40.01	2.00	3.19
209, 309, 409, 509, 609, 809, 909, 1009, 1109, 12A09	1BHK	40.01	2.00	3.19
203, 303, 403, 503, 603, 803, 903, 1003, 1103, 12A03	1BHK	40.10	2.03	3.19
208, 308, 408, 508, 608, 808, 908, 1008, 1108, 12A08	1BHK	40.10	2.03	3.19
204, 304, 404, 504, 604, 804, 904, 1004, 1104, 12A04	1BHK	40.87	2.29	3.19
207, 307, 407, 507, 607, 807, 907, 1007, 1107, 12A07	1BHK	40.87	2.29	3.19
205, 305, 405, 505, 605, 805, 905, 1005, 1105, 12A05	1BHK	40.60	2.03	3.19
206, 306, 406, 506, 606, 806, 906, 1006, 1106, 12A06	1BHK	40.60	2.03	3.19

FACTORS OF CONVERSION FROM SQ.M TO SQ.FT IS 10.764

NOTE: "CARPET AREA" MEANS THE NET USABLE FLOOR AREA OF AN APARTMENT, EXCLUDING THE AREA COVERED BY THE EXTERNAL WALLS, AREAS UNDER SERVICE SHAFTS, EXCLUSIVE BALCONY OR VERANDAH AREA AND EXCLUSIVE OPEN TERRACE AREA, BUT INCLUDES THE AREA COVERED BY THE INTERNAL PARTITION WALLS OF THE APARTMENT, INTERNAL COLUMNS/SHEAR WALLS EMBEDDED AS A PART OF INTERNAL PARTITION WALLS ARE INCLUDED IN CARPET AREA.



REFUGE FLOOR PLAN (7TH & 12TH FLOOR) H4



AREA STATEMENT IN SQ.M

FLAT NO.	TYPE	CARPET	UTILITY	BALCONY
701, 1201	1BHK	40.88	2.29	3.19
710, 1210	1BHK	40.88	2.29	3.19
702, 1202	1BHK	40.01	2.00	3.19
709, 1209	1BHK	40.01	2.00	3.19
703, 1203	1BHK	40.10	2.03	3.19
708, 1208	1BHK	40.10	2.03	3.19
704, 1204	1BHK	40.87	2.29	3.19
707, 1207	1BHK	40.87	2.29	3.19
705, 1205	1BHK	40.60	2.03	3.19
706, 1206	1BHK	40.60	2.03	3.19



FACTORS OF CONVERSION FROM SQ.M TO SQ.FT IS 10.764

NOTE: "CARPET AREA" MEANS THE NET USABLE FLOOR AREA OF AN APARTMENT, EXCLUDING THE AREA COVERED BY THE EXTERNAL WALLS, AREAS UNDER SERVICE SHAFTS, EXCLUSIVE BALCONY OR VERANDAH AREA AND EXCLUSIVE OPEN TERRACE AREA, BUT INCLUDES THE AREA COVERED BY THE INTERNAL PARTITION WALLS OF THE APARTMENT, INTERNAL COLUMNS/SHEAR WALLS EMBEDDED AS A PART OF INTERNAL PARTITION WALLS ARE INCLUDED IN CARPET AREA.



ABOUT US

Paranjape Schemes (Construction) Ltd (PSCL) is an ever evolving real estate company which reflects the spirit of a modern and innovative India. The group has diversified into commercial as well as residential real estate projects over the years and has also built integrated retirement homes for senior citizens.

At present, the group has an ever expanding presence not only in Pune but also Mumbai, Nashik, Kolhapur, Chiplun, Ratnagiri, Bengaluru and Vadodara.

Three decades' track record of customer care and trust has seen Paranjape Schemes Construction Limited emerge as one of India's leading real-estate companies that stays in tune with the changing customers' needs and aspirations. Over 190 completed projects are home to more than 40,000 happy residents that form 'The Happiness Network', a happy, vibrant community where neighbours become friends and friends become family!

WINNING AN AWARD SIGNIFIES QUALITY. WINNING CONSISTENTLY SIGNIFIES EXCELLENCE.





INSPIRED BY YOU

At Paranjape, everything we do centers around the one thing that's most important to us. That's you, our customer. This focus has driven us to continuously re-imagine our creations to stay in tune with the customers needs of today and tomorrow. This is reflected in the wide array of our offerings.

32 ongoing projects across 8 cities encompass a wide range of offerings including 1 to 5-bedroom apartments, bungalows, row houses, penthouses, shops, offices, malls, multiplexes, hotel, schools, senior citizen homes... products that touch every aspect of human life.

Every single activity at Paranjape Schemes is guided by our core values that form an integral part of our DNA:

- Transparent
- Dependable
- Rooted
- Progressive
- Excellence
- Caring
- Inclusive

TOWNSHIPS



Forest Trails,
170 Acre, nature-inspired township, Bhugaon, Pune



Blue Ridge,
139-acre iconic township, Hinjawadi, Pune

UPMARKET HOMES IN METRO CITIES



127 Upper East,
redefining premium living, Santacruz (E),
Mumbai



Windfields,
contemporary, vibrant homes,
Kempepaura, Bengaluru



BROADWAY,
Sophisticated urban community,
Wakad, Pune

SENIOR LIVING



Athashri,
India's largest senior-living community, Pune, Bengaluru, Vadodara and California



Happiness Hub,
1-3 BR Homes, Khed, Shivapur

AFFORDABLE HOUSING

PARANJAPE



When you are a part of any Paranjape project, you are welcomed into a vibrant and a lively community that truly reflects a sense of oneness. The Happiness Network, as we call it, is synonymous with the spirit of New India where diverse people come together to form one harmonious community. The core idea of the network is to spread the feeling of belonging, where neighbors become friends or even family. Added to the spirit of oneness, is the pride of owning the Happiness Network Card. All the residents get to enjoy several benefits, privileges, discounts and offers across retail outlets, restaurants etc. In addition to all this, Paranjape Schemes also conducts several community events that include Paranjape Schemes Premier League, Ganarang, Anandghan and much more. These are only few examples to illustrate how all roads at Paranjape lead to a vibrant, happy life.

Come Experience the Rest!!







☎ 9021-378-678
www.pscl.in

Corporate office :
Paranjape Schemes (Construction) Ltd,
PSC House, Dr.Ketkar Road,
Off Prabhat Road, Pune-411 004.

Site Address :
Opposite Manas lake, Paud Road,
Bhugaon, Pune 412115



Maharera.mahaonline.gov.in
MAHARERA No.:
FOREST TRAILS EVERGLADES H3 and H4: P52100022655