



VALLEY

SUPERLATIVE SENIOR LIVING

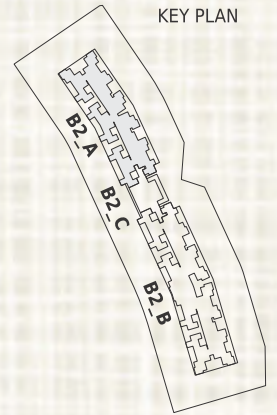
1 & 2 Bedroom senior citizen homes
@ Forest Trails, Pune

Floor Plans

BUILDING - B2 (WING-A)

1ST FLOOR PLAN

KEY PLAN



AREA STATEMENT IN SQM.

Flat No.	Type	Carpet	Enclosed Balcony	Terrace
A-101	2BHK	45.18	6.59	4.05
A-102	2BHK	45.14	6.61	4.05
A-103	2BHK	45.43	6.34	3.89
A-104	2BHK	45.28	6.46	3.88
A-105	2BHK	44.75	6.99	4.05
A-106	1BHK	38.72	8.48	4.39
A-107	1BHK	39.04	8.01	4.39
A-108	1BHK	38.99	8.01	4.39
A-109	1BHK	38.99	8.01	4.35
A-110	1BHK	38.99	8.01	4.35
A-111	1BHK	38.99	8.01	4.39
A-112	1BHK	38.87	8.03	4.39

FACTOR OF CONVERSION FROM SQ.M. TO SQ.FT. IS 10.764.

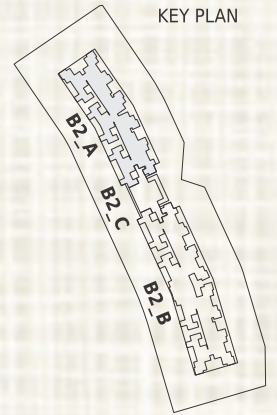
"NOTE: "carpet area" means the net usable floor area of an apartment, excluding the area covered by the external walls, areas under services shafts, exclusive balcony or verandah area and exclusive open terrace area, but includes the area covered by the internal partition walls of the apartment. Internal columns / shear walls embedded as a part of internal partition walls are included in carpet area.



BUILDING - B2 (WING-A)

2nd, 4th, 6th, 8th, 10th & 12th Floor Plan

KEY PLAN



AREA STATEMENT IN SQM.

Flat No.	Type	Carpet	Enclosed Balcony	Terrace
A-201,401,601,801,1001,1201	2BHK	45.72	6.08	4.09
A-202,402,602,802,1002,1202	2BHK	45.68	6.09	4.10
A-203,403,603,803,1003,1203	2BHK	45.64	6.17	3.79
A-204,404,604,804,1004,1204	2BHK	45.62	6.15	3.79
A-205,405,605,805,1005,1205	2BHK	45.46	6.31	4.10
A-206,406,606,806,1006,1206	1BHK	34.39	8.11	4.44
A-207,407,607,807,1007,1207	1BHK	34.60	7.86	4.44
A-208,408,608,808,1008,1208	1BHK	34.78	7.64	4.44
A-209,409,609,809,1009,1209	1BHK	34.78	7.64	4.44
A-210,410,610,810,1010,1210	1BHK	34.78	7.64	4.44
A-211,411,611,811,1011,1211	1BHK	34.78	7.64	4.44
A-212,412,612,812,1012,1212	1BHK	34.71	7.67	4.44

FACTOR OF CONVERSION FROM SQ.M. TO SQ.FT. IS 10.764.

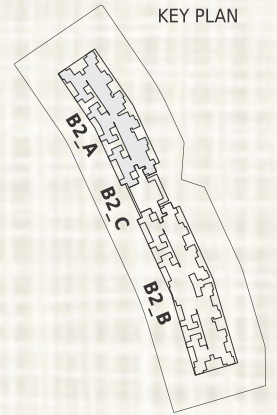
*NOTE: "carpet area" means the net usable floor area of an apartment, excluding the area covered by the external walls, areas under services shafts, exclusive balcony or verandah area and exclusive open terrace area, but includes the area covered by the internal partition walls of the apartment. Internal columns / shear walls embedded as a part of internal partition walls are included in carpet area.



BUILDING - B2 (WING-A)

3rd, 5th, 7th, 9th, 11th & 13th Floor Plan

KEY PLAN



AREA STATEMENT IN SQM.

Flat No.	Type	Carpet	Enclosed Balcony	Terrace
A-301,501,701,901,1101,1301	2BHK	45.18	6.59	4.05
A-302,502,702,902,1102,1302	2BHK	45.14	6.61	4.05
A-303,503,703,903,1103,1303	2BHK	45.43	6.34	3.89
A-304,504,704,904,1104,1304	2BHK	45.40	6.34	3.88
A-305,505,705,905,1105,1305	2BHK	45.14	6.60	4.05
A-306,506,706,906,1106,1306	1BHK	34.39	8.11	4.39
A-307,507,707,907,1107,1307	1BHK	34.82	7.64	4.39
A-308,508,708,908,1108,1308	1BHK	34.78	7.64	4.39
A-309,509,709,909,1109,1309	1BHK	34.77	7.64	4.35
A-310,510,710,910,1110,1310	1BHK	34.77	7.64	4.35
A-311,511,711,911,1111,1311	1BHK	34.78	7.64	4.39
A-312,512,712,912,1112,1312	1BHK	34.71	7.67	4.39

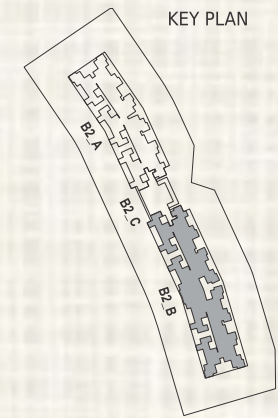
FACTOR OF CONVERSION FROM SQ.M. TO SQ.FT. IS 10.764.

*NOTE: "carpet area" means the net usable floor area of an apartment, excluding the area covered by the external walls, areas under services shafts, exclusive balcony or verandah area and exclusive open terrace area, but includes the area covered by the internal partition walls of the apartment. Internal columns / shear walls embedded as a part of internal partition walls are included in carpet area.



BUILDING - B2 (WING-B)

1ST FLOOR PLAN



AREA STATEMENT IN SQM.

Flat No.	Type	Carpet	Enclosed Balcony	Terrace
B-101	1BHK	38.63	8.28	4.40
B-102	1BHK	38.73	8.22	4.39
B-103	1BHK	39.70	7.40	4.39
B-104	1BHK	39.70	7.40	4.39
B-105	1BHK	39.70	7.40	4.39
B-106	1BHK	39.70	7.40	4.39
B-107	1BHK	39.65	7.40	4.39
B-108	1BHK	39.70	7.41	4.39
B-109	1BHK	39.01	8.24	4.39
B-110	2BHK	45.87	5.89	4.05
B-111	2BHK	45.87	5.88	4.05
B-112	1BHK	39.28	8.27	4.39
B-113	1BHK	39.16	8.32	4.39
B-114	2BHK	45.87	5.89	4.05
B-115	2BHK	45.87	5.89	4.05
B-116	2BHK	46.02	5.76	4.05

FACTOR OF CONVERSION FROM SQ.M. TO SQ.FT. IS 10.764.

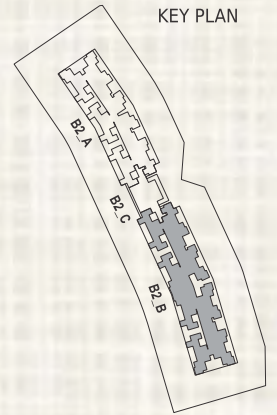
*NOTE: "carpet area" means the net usable floor area of an apartment, excluding the area covered by the external walls, areas under services shafts, exclusive balcony or verandah area and exclusive open terrace area, but includes the area covered by the internal partition walls of the apartment. Internal columns / shear walls embedded as a part of internal partition walls are included in carpet area.



BUILDING - B2 (WING-B)

2nd, 4th, 6th, 8th, 10th & 12th Floor Plan

KEY PLAN



AREA STATEMENT IN SQM.

Flat No.	Type	Carpet	Enclosed Balcony	Terrace
B-201,401,601,801,1001,1201	1BHK	34.96	7.42	4.44
B-202,402,602,802,1002,1202	1BHK	35.02	7.37	4.44
B-203,403,603,803,1003,1203	1BHK	34.86	7.60	4.44
B-204,404,604,804,1004,1204	1BHK	35.07	7.40	4.44
B-205,405,605,805,1005,1205	1BHK	34.86	7.60	4.44
B-206,406,606,806,1006,1206	1BHK	35.07	7.40	4.44
B-207,407,607,807,1007,1207	1BHK	35.02	7.40	4.44
B-208,408,608,808,1008,1208	1BHK	35.07	7.41	4.44
B-209,409,609,809,1009,1209	1BHK	35.14	7.39	4.44
B-210,410,610,810,1010,1210	2BHK	46.37	5.41	4.09
B-211,411,611,811,1011,1211	2BHK	46.38	5.41	4.09
B-212,412,612,812,1012,1212	1BHK	35.51	7.41	4.44
B-213,413,613,813,1013,1213	1BHK	35.44	7.47	4.44
B-214,414,614,814,1014,1214	2BHK	46.37	5.41	4.10
B-215,415,615,815,1015,1215	2BHK	46.38	5.41	4.10
B-216,416,616,816,1016,1216	2BHK	46.52	5.29	4.10

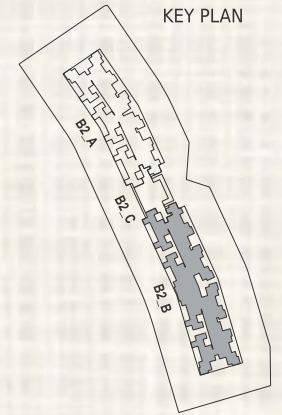
FACTOR OF CONVERSION FROM SQ.M. TO SQ.FT. IS 10.764.

*NOTE: "carpet area" means the net usable floor area of an apartment, excluding the area covered by the external walls, areas under services shafts, exclusive balcony or verandah area and exclusive open terrace area, but includes the area covered by the internal partition walls of the apartment. Internal columns / shear walls embedded as a part of internal partition walls are included in carpet area.



BUILDING - B2 (WING-B)

3rd, 5th, 7th, 9th, 11th & 13th Floor Plan



AREA STATEMENT IN SQM.

Flat No.	Type	Carpet	Enclosed Balcony	Terrace
B-301,501,701,901,1101,1301,	1BHK	34.96	7.42	4.40
B-302,502,702,902,1102,1302,	1BHK	35.02	7.37	4.39
B-303,503,703,903,1103,1303,	1BHK	35.06	7.40	4.39
B-304,504,704,904,1104,1304,	1BHK	35.07	7.39	4.39
B-305,505,705,905,1105,1305,	1BHK	35.07	7.40	4.39
B-306,506,706,906,1106,1306,	1BHK	35.07	7.40	4.39
B-307,507,707,907,1107,1307,	1BHK	35.02	7.40	4.39
B-308,508,708,908,1108,1308,	1BHK	35.07	7.41	4.39
B-309,509,709,909,1109,1309,	1BHK	35.14	7.38	4.39
B-310,510,710,910,1110,1310,	2BHK	45.87	5.89	4.05
B-311,511,711,911,1111,1311,	2BHK	45.87	5.89	4.05
B-312,512,712,912,1112,1312,	1BHK	35.50	7.41	4.39
B-313,513,713,913,1113,1313,	1BHK	35.45	7.47	4.39
B-314,514,714,914,1114,1314,	2BHK	45.87	5.89	4.05
B-315,515,715,915,1115,1315,	2BHK	45.87	5.89	4.05
B-316,516,716,916,1116,1316,	2BHK	46.02	5.76	4.05

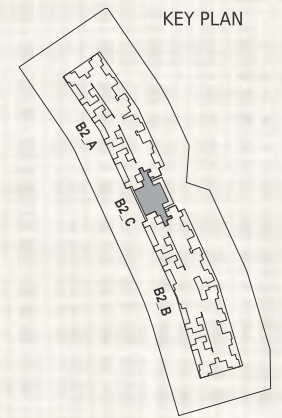
FACTOR OF CONVERSION FROM SQ.M. TO SQ.FT. IS 10.764.

*NOTE: "carpet area" means the net usable floor area of an apartment, excluding the area covered by the external walls, areas under services shafts, exclusive balcony or verandah area and exclusive open terrace area, but includes the area covered by the internal partition walls of the apartment. Internal columns / shear walls embedded as a part of internal partition walls are included in carpet area.



BUILDING - B2 (WING-C)

1st Floor Plan



AREA STATEMENT IN SQM.

	Type	
C-101	1 Guest Room	NOT FOR SALE
C-102	1 Guest Room	
C-103	1 Guest Room	
C-104	1 Guest Room	

FACTOR OF CONVERSION FROM SQ.M. TO SQ.FT. IS 10.764.

*NOTE: "carpet area" means the net usable floor area of an apartment, excluding the area covered by the external walls, areas under services shafts, exclusive balcony or verandah area and exclusive open terrace area, but includes the area covered by the internal partition walls of the apartment. Internal columns / shear walls embedded as a part of internal partition walls are included in carpet area.

