

PARANJAPE

# TRIDENT

BUSINESS PARK





# GROUND FLOOR PLAN

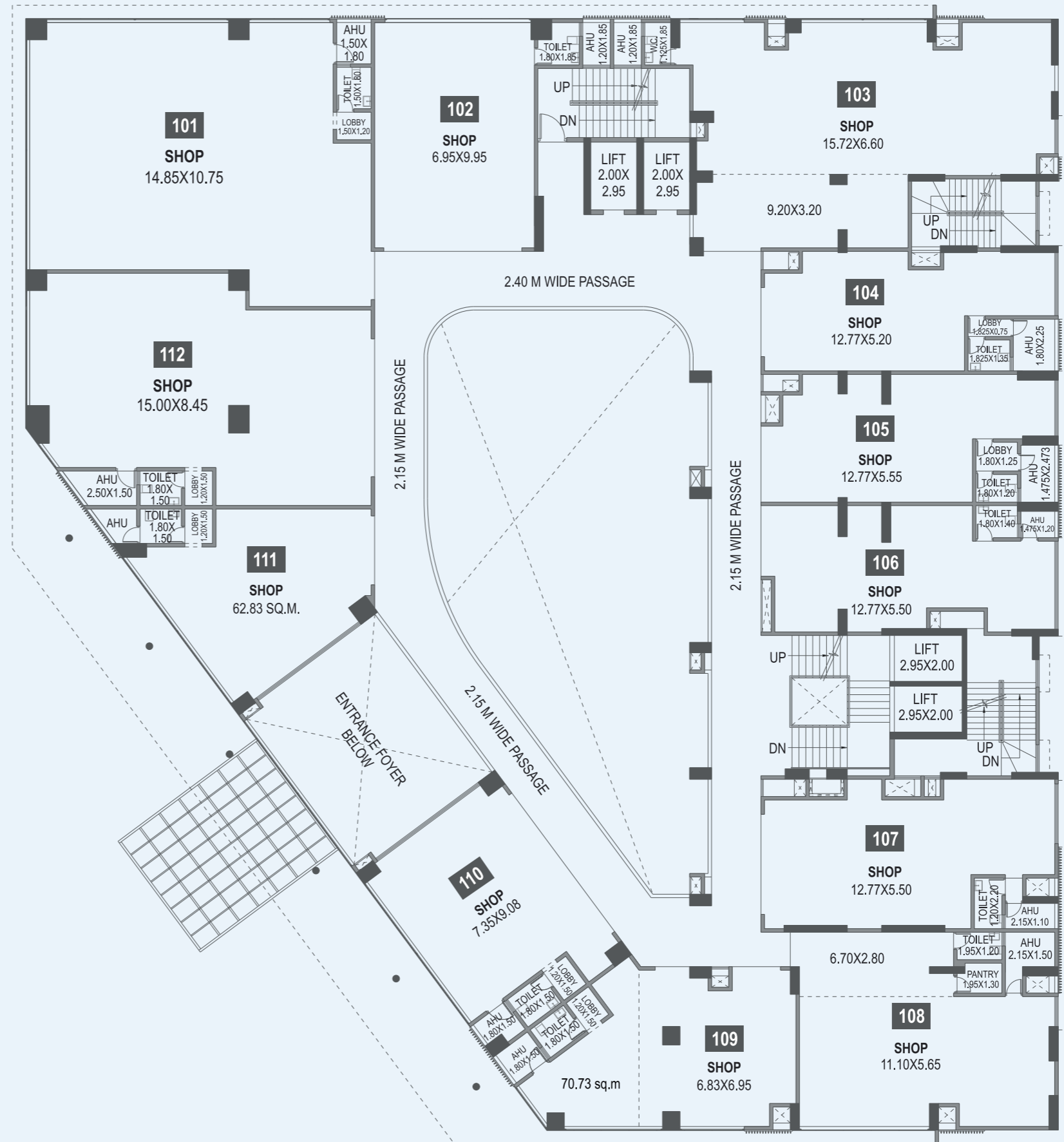


## AREA STATEMENT IN SQ.M.

UNIT NO.	CARPET AREA	SERVICE / AHU AREA
S 001	164.50	2.70
S 002	72.22	2.22
S 003	131.18	2.22
S 004	59.01	4.05
S 005	63.01	3.65
S 006	61.82	1.70
S 007	72.11	2.37
S 008	86.47	4.09
S 009	70.73	2.55
S 010	66.63	2.21
S 011	63.10	2.17
S 012	131.49	4.01

FACTOR OF CONVERSION FROM SQ.M. TO SQ.FT. IS 10.764.





AREA STATEMENT IN SQ.M.

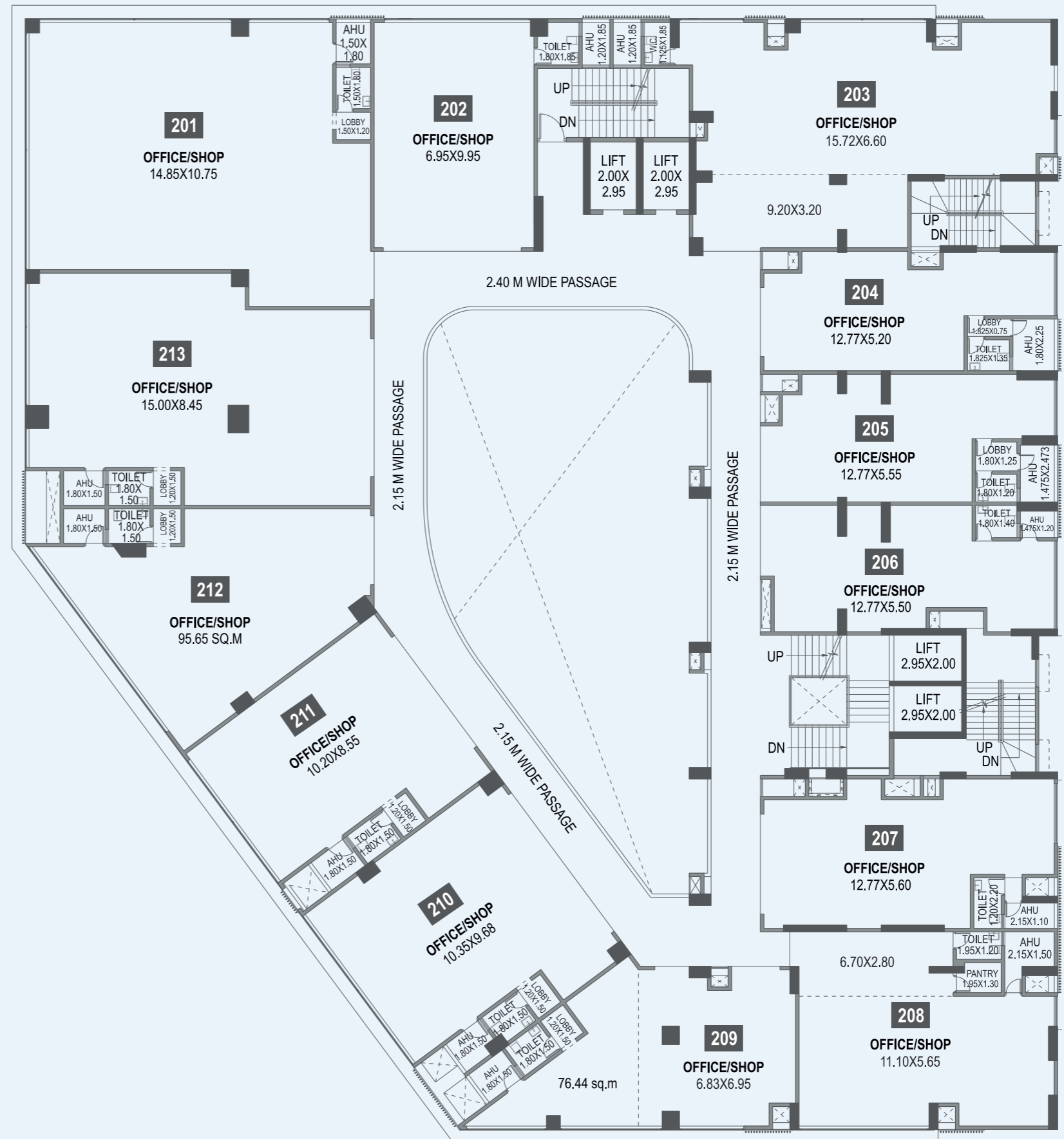
UNIT NO.	CARPET AREA	SERVICE / AHU AREA
S 101	164.50	2.70
S 102	72.22	2.22
S 103	131.18	2.22
S 104	59.01	4.05
S 105	63.01	3.65
S 106	61.82	1.70
S 107	72.11	2.37
S 108	86.47	4.09
S 109	70.73	2.55
S 110	67.08	2.21
S 111	62.83	2.17
S 112	131.49	4.01

FACTOR OF CONVERSION FROM SQ.M. TO SQ.FT. IS 10.764.

\*NOTE : "Carpet area" means the net usable floor area of an apartment, excluding the area covered by the external walls, areas under services shafts, exclusive balcony or verandah area and exclusive open terrace area, but includes the area covered by the internal partition walls of the apartment. Internal columns / shear walls embedded as a part of internal partition walls are included in carpet area.



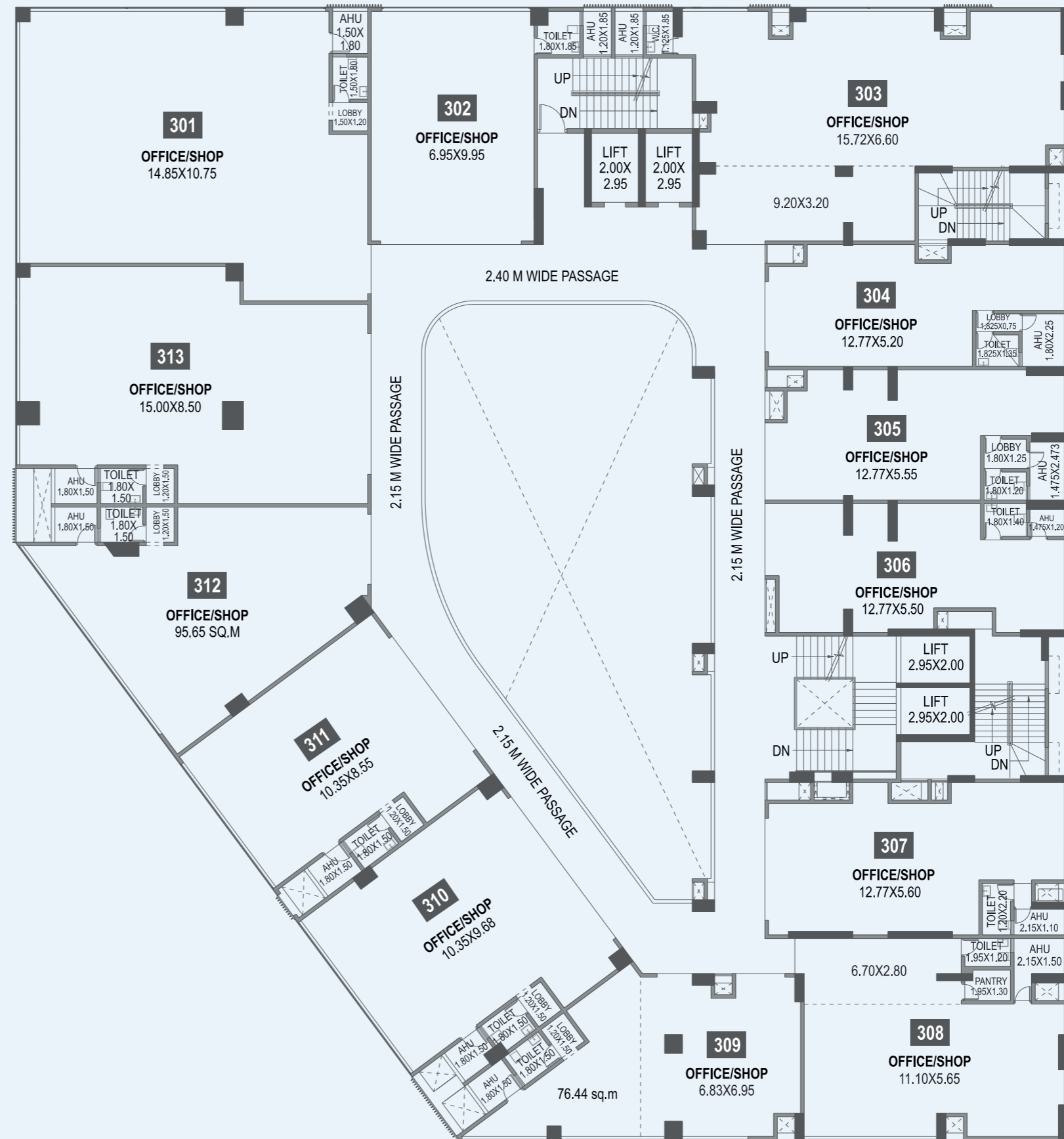
# SECOND FLOOR PLAN



## AREA STATEMENT IN SQ.M.

UNIT NO.	CARPET AREA	SERVICE / AHU AREA
S 201	165.08	2.70
S 202	72.44	2.22
S 203	131.17	2.22
S 204	59.01	4.05
S 205	63.01	3.65
S 206	61.82	1.70
S 207	72.11	2.37
S 208	86.47	4.09
S 209	76.44	2.70
S 210	93.28	2.47
S 211	82.85	2.70
S 212	95.65	2.70
S 213	135.58	2.70

FACTOR OF CONVERSION FROM SQ.M. TO SQ.FT. IS 10.764.

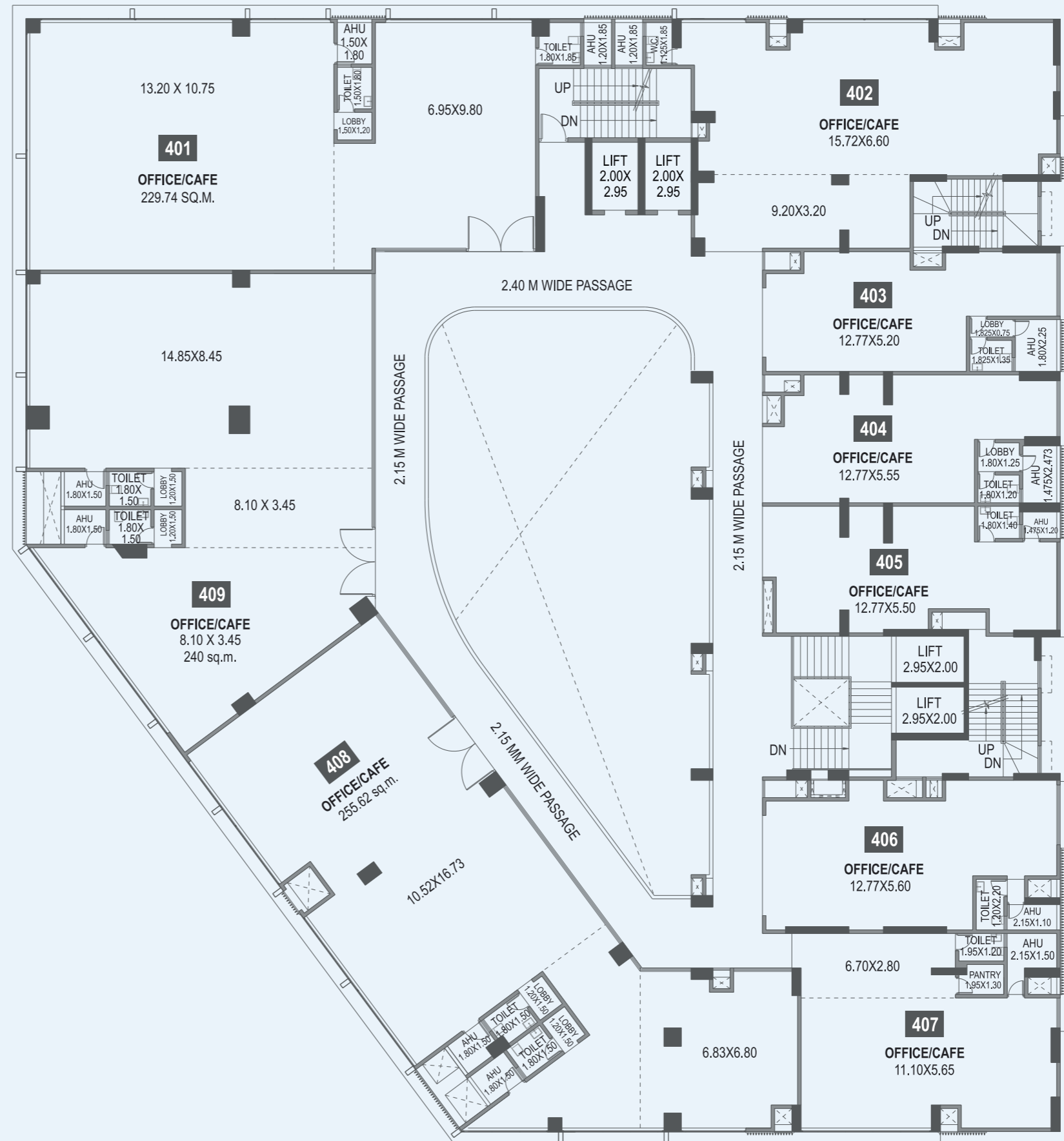


AREA STATEMENT IN SQ.M.

UNIT NO.	CARPET AREA	SERVICE / AHU AREA
S 301	165.08	2.70
S 302	72.44	2.22
S 303	131.17	2.22
S 304	59.01	4.05
S 305	63.01	3.65
S 306	61.82	1.70
S 307	72.11	2.37
S 308	86.47	4.09
S 309	76.44	2.70
S 310	93.28	2.47
S 311	82.85	2.70
S 312	95.65	2.70
S 313	135.58	2.70

FACTOR OF CONVERSION FROM SQ.M. TO SQ.FT. IS 10.764.

# FOURTH FLOOR PLAN



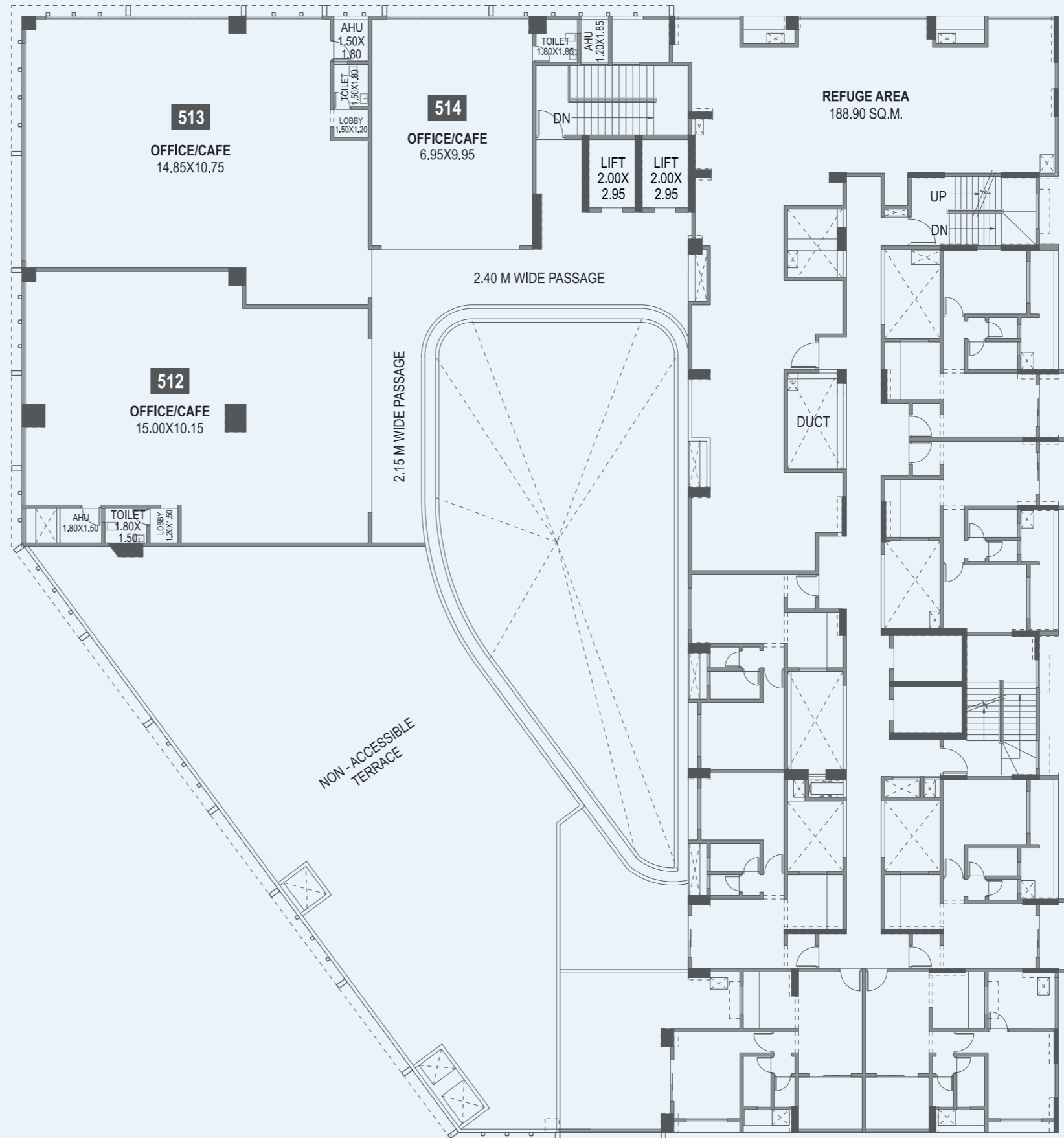
## AREA STATEMENT IN SQ.M.

UNIT NO.	CARPET AREA	SERVICE / AHU AREA
401	229.75	4.92
402	131.17	2.22
403	59.01	4.05
404	63.01	3.65
405	61.82	1.70
406	72.11	2.37
407	86.47	4.09
408	255.62	5.37
409	240.69	5.67

FACTOR OF CONVERSION FROM SQ.M. TO SQ.FT. IS 10.764.

\* " "





AREA STATEMENT IN SQ.M.

UNIT NO.	CARPET AREA	SERVICE / AHU AREA
512	160.31	2.70
513	165.08	2.70
514	72.44	2.22

FACTOR OF CONVERSION FROM SQ.M. TO SQ.FT. IS 10.764.



\*NOTE : "Carpet area" means the net usable floor area of an apartment, excluding the area covered by the external walls, areas under services shafts, exclusive balcony or verandah area and exclusive open terrace area, but includes the area covered by the internal partition walls of the apartment. Internal columns / shear walls embedded as a part of internal partition walls are included in carpet area.