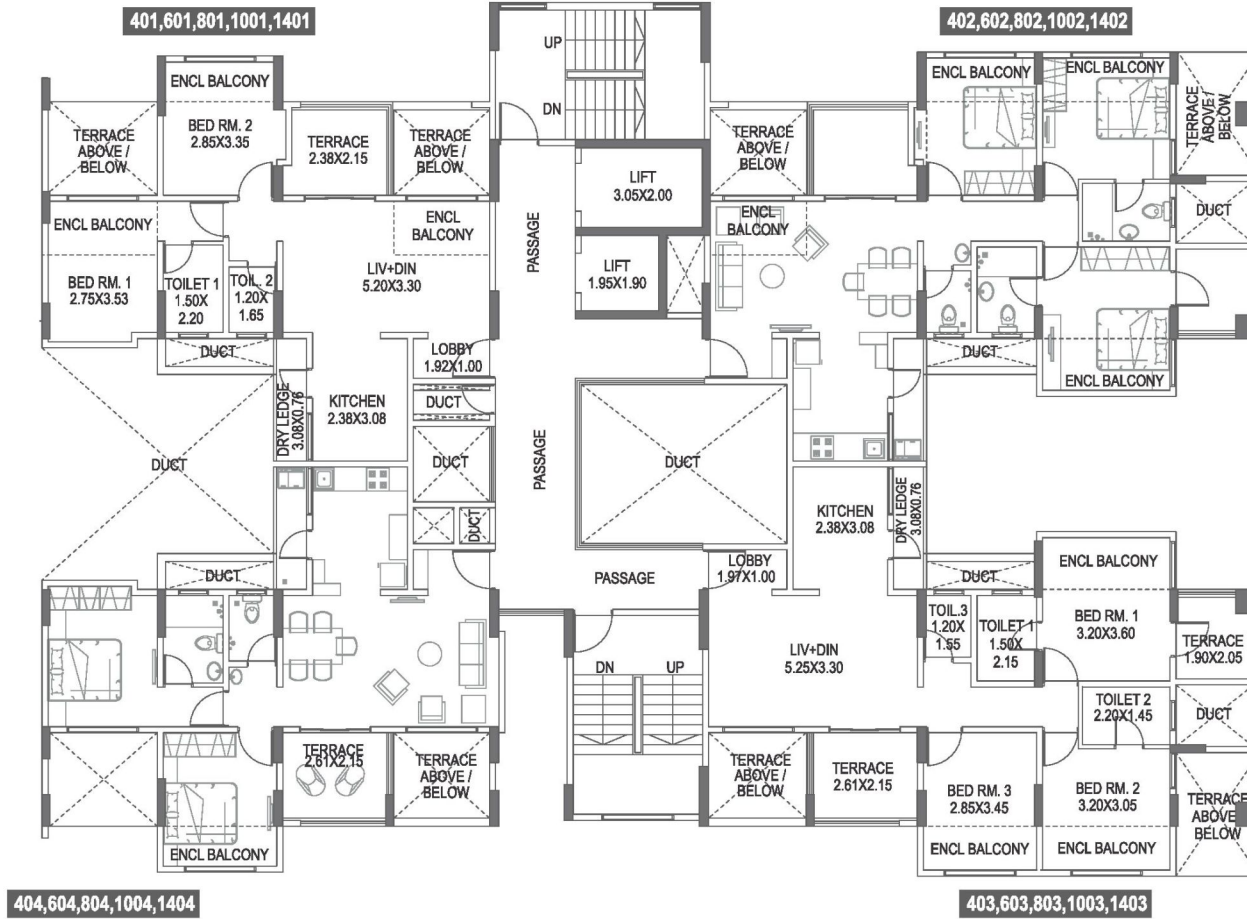
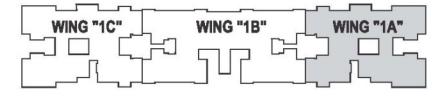


TOWER 1 WING - A

4TH, 6TH, 8TH, 10TH & 14TH FLOOR PLAN



AREA STATEMENT IN SQ.MT

FLAT NO.	TYPE	CARPET AREA	ENCL. BALCONY	TERRACE CARPET	DRY BAL
402, 802	3-BHK	61.28	14.15	9.41	2.43
1003,1403	3-BHK	64.38	10.98	9.60	2.43

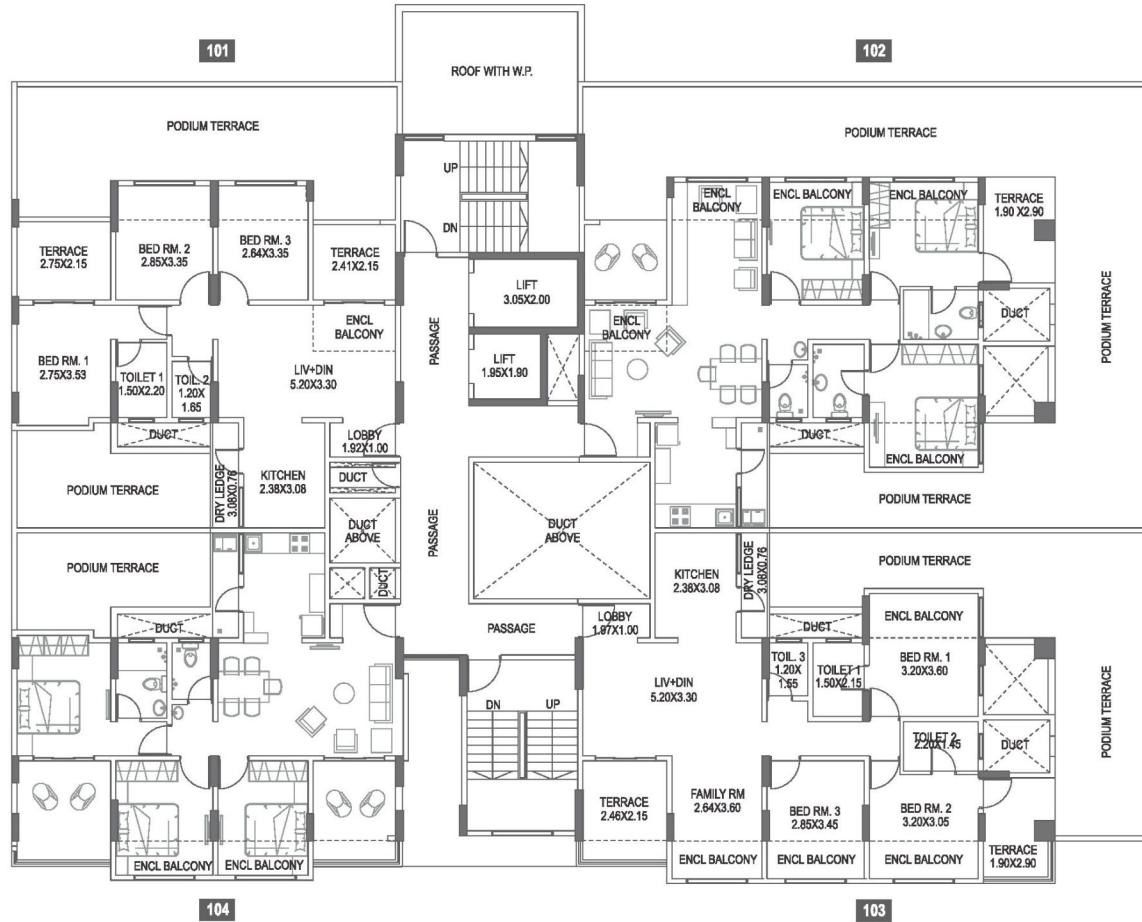
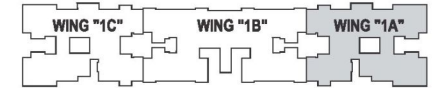
FACTOR OF CONVERSION FROM SQ.M. TO SQ.FT. IS 10.764.

*NOTE: "carpet area" means the net usable floor area of an apartment, excluding the area covered by the external walls, areas under services shafts, exclusive balcony or verandah area and exclusive open terrace area, but includes the area covered by the internal partition walls of the apartment. Internal columns / shear walls embedded as a part of internal partition walls are included in carpet area.



TOWER 1 WING - A

1ST FLOOR PLAN



AREA STATEMENT IN SQ.MT

FLAT NO.	TYPE	CARPET AREA	ENCL. BALCONY	TERRACE CARPET	DRY BAL	PODIUM TERRACE
102	3-BHK	71.09	14.05	12.11	2.43	95.50
104	2.5-BHK	61.61	5.64	13.62	2.43	16.10

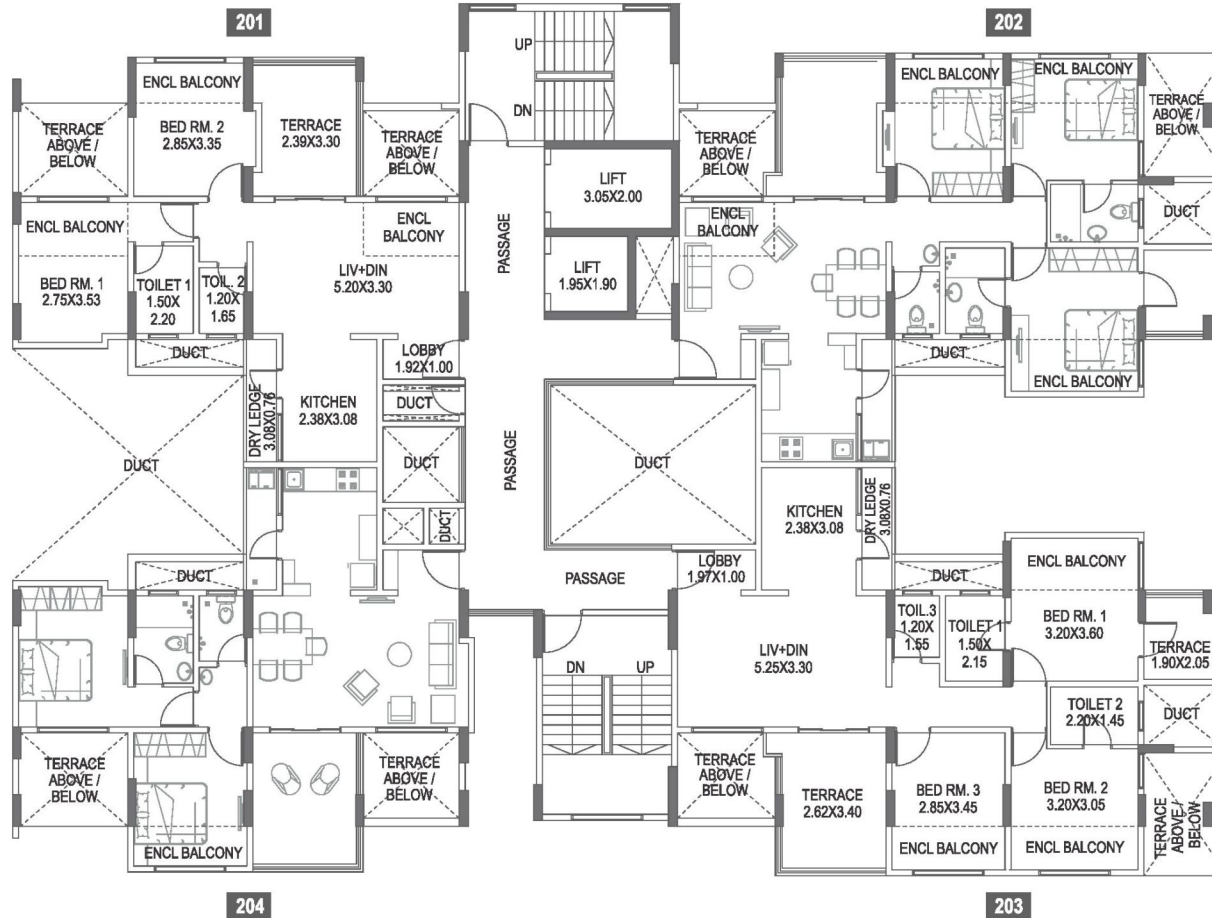
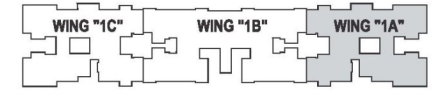
FACTOR OF CONVERSION FROM SQ.M. TO SQ.FT. IS 10.764.

*NOTE: "carpet area" means the net usable floor area of an apartment, excluding the area covered by the external walls, areas under services shafts, exclusive balcony or verandah area and exclusive open terrace area, but includes the area covered by the internal partition walls of the apartment. Internal columns / shear walls embedded as a part of internal partition walls are included in carpet area.



TOWER 1 WING - A

2ND FLOOR PLAN



AREA STATEMENT IN SQ.MT

FLAT NO.	TYPE	CARPET AREA	ENCL. BALCONY	TERRACE CARPET	DRY BAL
202	3-BHK	61.43	14.15	12.81	2.43
203	3-BHK	64.37	10.98	13.21	2.43

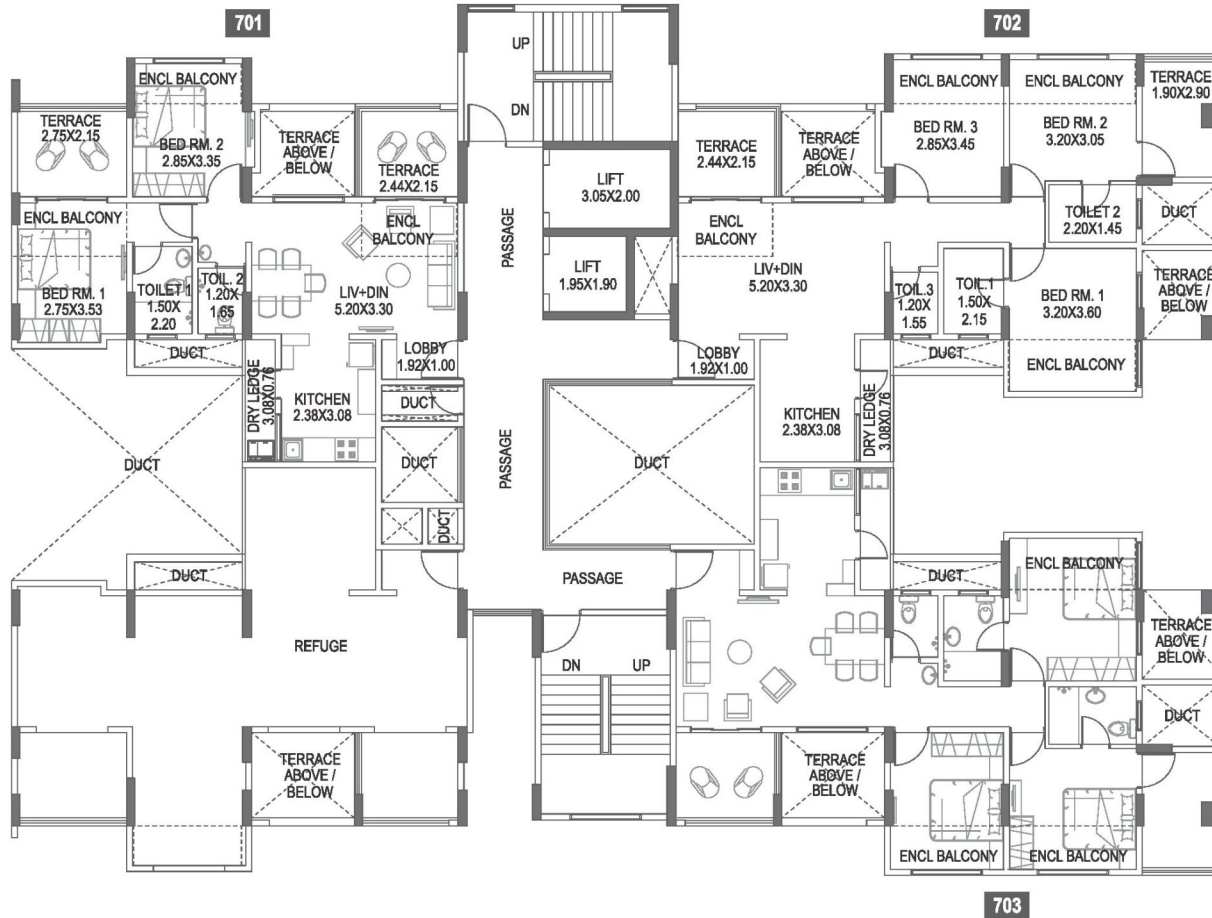
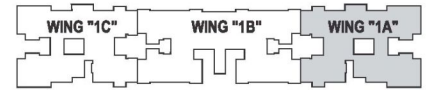
FACTOR OF CONVERSION FROM SQ.M. TO SQ.FT. IS 10.764.

*NOTE: "carpet area" means the net usable floor area of an apartment, excluding the area covered by the external walls, areas under services shafts, exclusive balcony or verandah area and exclusive open terrace area, but includes the area covered by the internal partition walls of the apartment. Internal columns / shear walls embedded as a part of internal partition walls are included in carpet area.



TOWER 1 WING - A

7TH FLOOR PLAN



AREA STATEMENT IN SQ.MT

FLAT NO.	TYPE	CARPET AREA	ENCL. BALCONY	TERRACE CARPET	DRY BAL
703	3-BHK	64.38	10.98	10.91	2.43

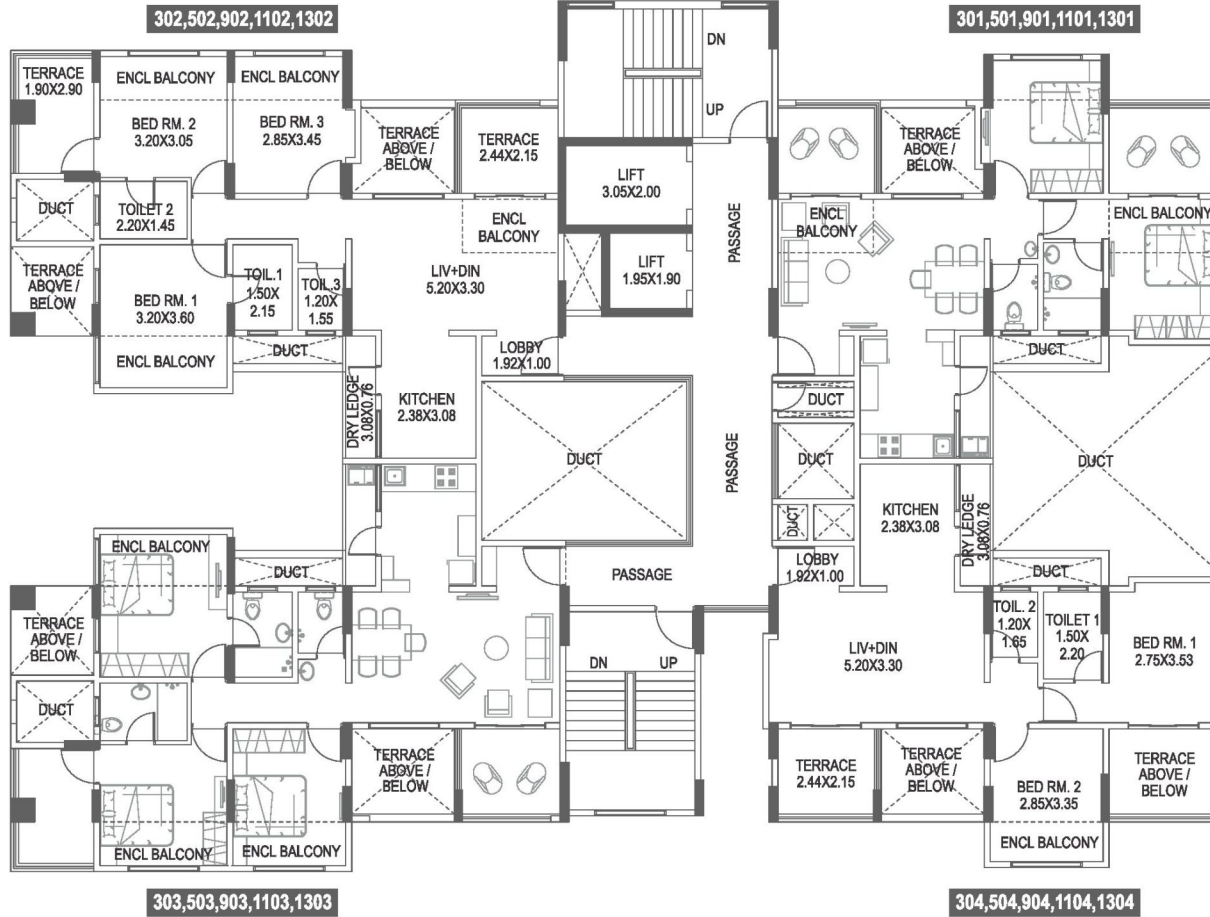
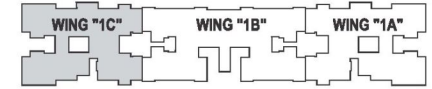
FACTOR OF CONVERSION FROM SQ.M. TO SQ.FT. IS 10.764.

*NOTE: "carpet area" means the net usable floor area of an apartment, excluding the area covered by the external walls, areas under services shafts, exclusive balcony or verandah area and exclusive open terrace area, but includes the area covered by the internal partition walls of the apartment. Internal columns / shear walls embedded as a part of internal partition walls are included in carpet area.



TOWER 1 WING - C

3RD, 5TH, 7TH, 9TH, 11TH & 13TH FLOOR PLAN



AREA STATEMENT IN SQ.MT

FLAT NO.	TYPE	CARPET AREA	ENCL. BALCONY	TERRACE CARPET	DRY BAL
502, 1102	3-BHK	61.09	14.15	10.88	2.43
503	3-BHK	64.38	10.98	10.96	2.43

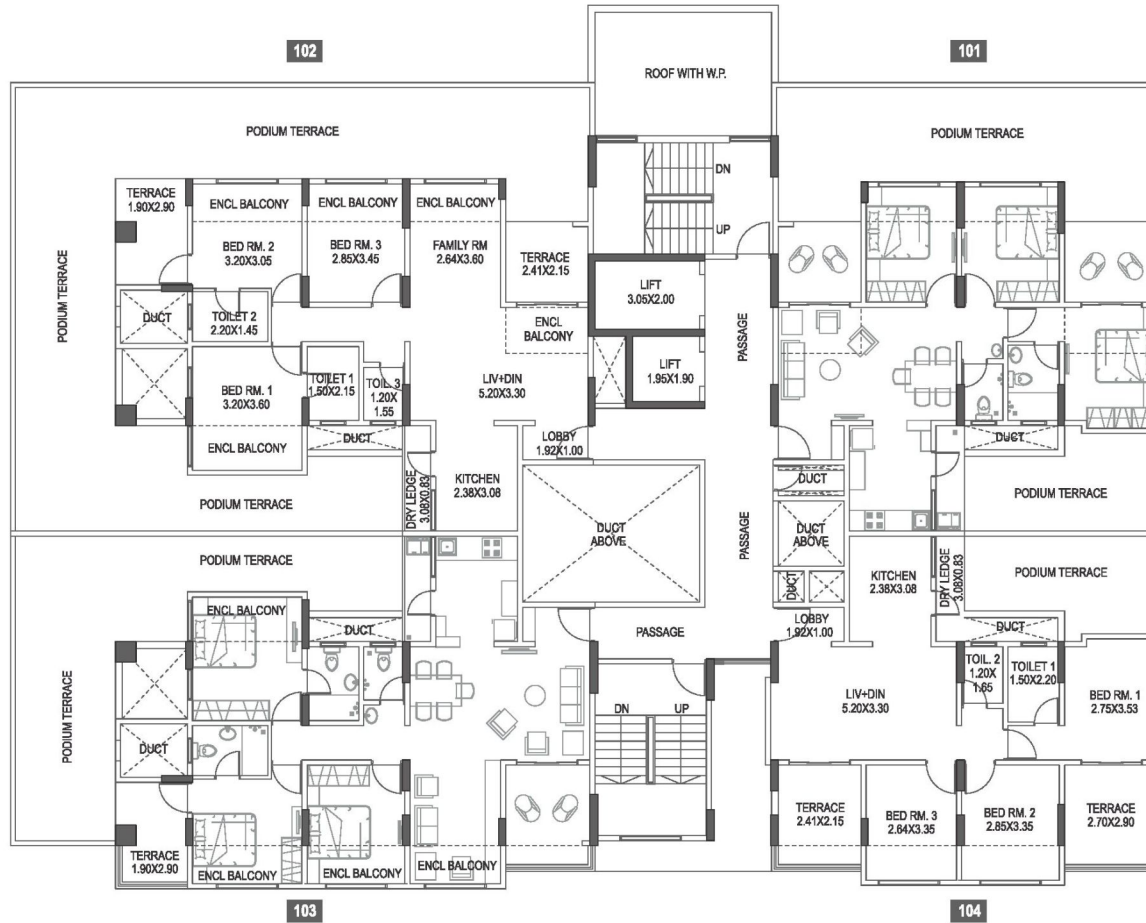
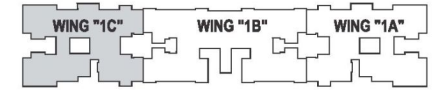
FACTOR OF CONVERSION FROM SQ.M. TO SQ.FT. IS 10.764.

*NOTE: "carpet area" means the net usable floor area of an apartment, excluding the area covered by the external walls, areas under services shafts, exclusive balcony or verandah area and exclusive open terrace area, but includes the area covered by the internal partition walls of the apartment. Internal columns / shear walls embedded as a part of internal partition walls are included in carpet area.



TOWER 1 WING - C

1ST FLOOR PLAN



AREA STATEMENT IN SQ.MT

FLAT NO.	TYPE	CARPET AREA	ENCL. BALCONY	TERRACE CARPET	DRY BAL	PODIUM TERRACE
102	3-BHK	71.09	14.05	12.11	2.43	95.50
103	3-BHK	71.09	14.05	11.17	2.43	45.84

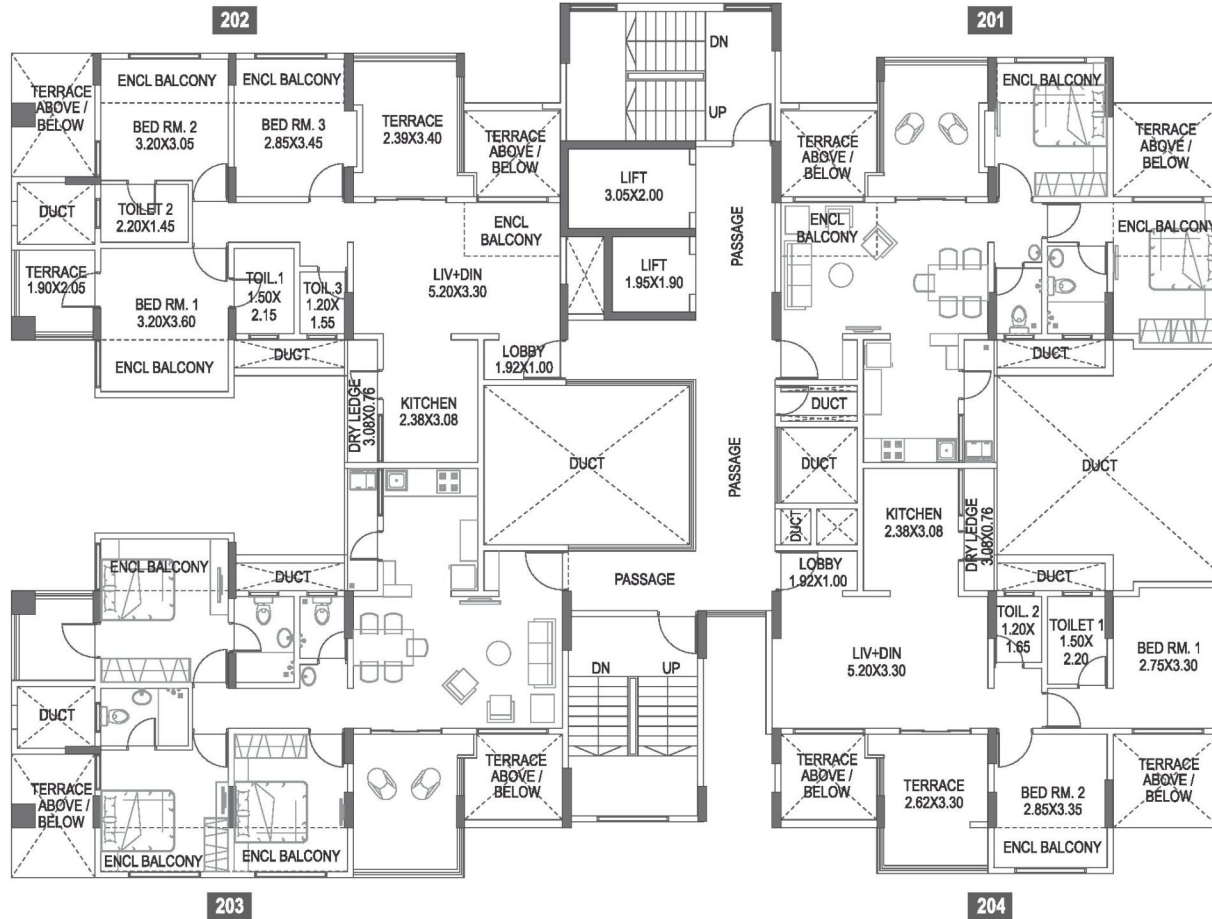
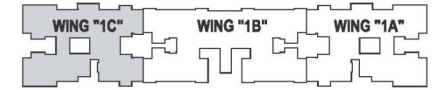
FACTOR OF CONVERSION FROM SQ.M. TO SQ.FT. IS 10.764.

*NOTE: "carpet area" means the net usable floor area of an apartment, excluding the area covered by the external walls, areas under services shafts, exclusive balcony or verandah area and exclusive open terrace area, but includes the area covered by the internal partition walls of the apartment. Internal columns / shear walls embedded as a part of internal partition walls are included in carpet area.



TOWER 1 WING - C

2ND FLOOR PLAN



AREA STATEMENT IN SQ.MT

FLAT NO.	TYPE	CARPET AREA	ENCL. BALCONY	TERRACE CARPET	DRY BAL
202	3-BHK	61.13	14.15	12.81	2.43

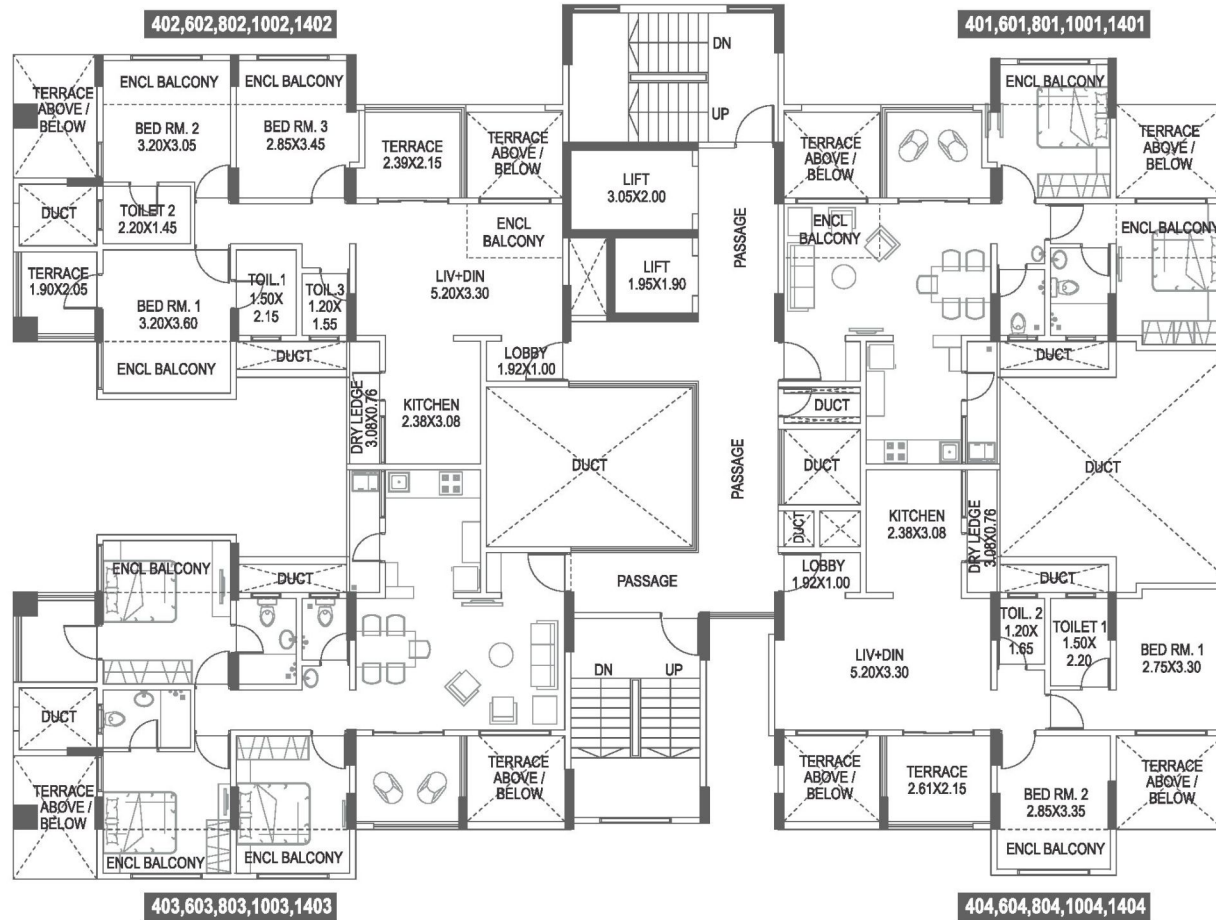
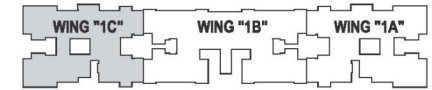
FACTOR OF CONVERSION FROM SQ.M. TO SQ.FT. IS 10.764.

*NOTE: "carpet area" means the net usable floor area of an apartment, excluding the area covered by the external walls, areas under services shafts, exclusive balcony or verandah area and exclusive open terrace area, but includes the area covered by the internal partition walls of the apartment. Internal columns / shear walls embedded as a part of internal partition walls are included in carpet area.



TOWER 1 WING - C

4TH, 6TH, 8TH, 10TH, 12TH & 14TH FLOOR PLAN



AREA STATEMENT IN SQ.MT

FLAT NO.	TYPE	CARPET AREA	ENCL. BALCONY	TERRACE CARPET	DRY BAL
801	2-BHK	47.65	9.66	5.57	2.43

FACTOR OF CONVERSION FROM SQ.M. TO SQ.FT. IS 10.764.

*NOTE: "carpet area" means the net usable floor area of an apartment, excluding the area covered by the external walls, areas under services shafts, exclusive balcony or verandah area and exclusive open terrace area, but includes the area covered by the internal partition walls of the apartment. Internal columns / shear walls embedded as a part of internal partition walls are included in carpet area.

